



AGENDA

City of Richland Parks and Recreation Commission #10-2012

Richland City Hall ~ 505 Swift Boulevard ~ City Council Chambers

Thursday, November 8, 2012, 7:00 PM

Commission Chair Gutierrez, Vice Chair Jones
Members: Commissioners Doran, Valentino, Maya, Katipamula, Bern,
Liaisons: Council Liaison Kent, Alternate Council Liaison Anderson

Welcome

Pledge of Allegiance

Roll Call

Approval of Agenda

Approval of October 11, 2012 Minutes

Recreation Report

Presentations

1. Richland National Little League (Zorba Manolopoulos)
2. Greater Richland Little League (Mark Schuster)

Public Hearing

Comments:

1. Public Comments
2. Council Liaison

Unfinished Business:

1. 2013 Strategic Plan and Objectives (Greg Jones)

New Business:

1. Shoreline Management Development Plan Review – Construction of a Private Dock at 2644 Harris Ave. (SM2-2012) (Jeff Rolph)
2. Park District 3 Funds for Howard Amon Park Tennis Courts (Phil Pinard)
3. Acquisition of 4.5 acres of Property Adjacent to Trailhead Park and the Badger Mountain Centennial Preserve (Phil Pinard)

Commission Comments

Adjournment

The Next Parks and Recreation Commission Meeting is Thursday, December 13, 2012

THIS MEETING IS BROADCAST LIVE ON CITYVIEW CHANNEL 13 AND ON WWW.CI.RICHLAND.WA.US/CITYVIEW

Richland City Hall is ADA Accessible with Access and Special Parking Available at the Entrance Facing George Washington Way. Requests for Sign Interpreters, Audio Equipment, or Other Special Services Must be Received 48 Hours Prior to the Meeting Time by Calling the City Clerk's Office at 509-942-7388.



MINUTES

Richland Parks and Recreation Commission Meeting #9-2012

Richland City Hall – 505 Swift Boulevard – Council Chambers

Thursday, October 11, 2012, 2012 ~ 7:00 pm

CALL TO ORDER: Vice Chair Gutierrez called the meeting to order at 7:00 pm.

ATTENDANCE:

Vice Chair Gutierrez, Commissioners Valentino, Doran, Bern, Katipamula, Johnson and Jones were present. Commissioner Maya was not present. Council Liaison Kent, Parks and Recreation Director Schiessl, Parks and Recreation Managers Pinard and Strand were also present.

APPROVAL OF THE AGENDA:

Vice Chair Gutierrez amended the agenda to add: New Business Item #1 Nomination of Chair. Commissioner Doran **moved** to approve the amended agenda. Commissioner Jones **seconded** the motion. Motion carried.

APPROVAL OF THE JULY 12, 2012, MINUTES:

Commissioner Jones **moved** to approve the September 13, 2012, minutes as presented. Commissioner Doran **seconded** the motion. Motion carried.

RECREATION REPORT:

Parks and Recreation Manager Laurel Strand reported that on October 12-13 the Richland Arts Commission and City of Richland play host to the Rivers of Ink from 10:30–5:30 at the Richland Community Center. Also, at the Community Center is the annual Fall Carnival on Friday, October 26, 6:30–8:30pm. She added that there will lots of activities and games including a haunted hayride, scavenger hunt, costume contest and professional photographs. On October 19–21, the Tri-Cities International Film Festival will be hosting short films at the Richland Community Center and a Zombie walk in the parks.

PRESENTATIONS:

None

PUBLIC HEARING:

None

COMMENTS:

1. Public Comments:

None

2. Council Liaison:

Council Member Kent reported that City Council approved the Recreation Conservative Office grant contract for Claybell Park. Ms. Kent also noted that she attended the Regional Public Facilities District and that the Pasco Facilities District is looking for a new location for the aquatic center. Also, a presentation was made by the Performing Arts Commission looking for additional funding opportunities and perhaps partnering with Three Rivers Convention Center expansion.

UNFINISHED BUSINESS:

None

NEW BUSINESS:

1. Nomination of Chair

Parks and Director Joe Schiessl explained that at the last Parks and Recreation workshop it was determined to fill the recently vacated Chair position on an interim basis through December 2012 and is now open to the Commissioners for discussion and nominations.

Commissioner Jones **moved** to nominate Maria Gutierrez for Interim Chair through December 2012. Commissioner Doran **seconded** the nomination. Motion passed. Mr. Schiessl explained that the Vice Chair position was now vacated. Commissioner Doran **moved** to nominate Commissioner Jones for Vice Chair through December 2012. Commissioner Valentino **seconded** the nomination. Motion passed.

2. Consideration of Proposed Stormwater Facility in Lease Groves Park

Public Works Director Pete Rogalsky provided a background report on the Washington State Grant Acceptance Agreements – Stormwater Outfall Water Quality. He explained that an engineering firm was hired in 2011 to prepare the assessment and to identify the City's stormwater outfalls. Two of the highest ranked outfalls for improvements were identified at Saint Street and a group of outfalls in the Canyon Terrace area. He explained that the state allocates grants through a competitive process. In 2011, the Washington State Legislature authorized \$30,000,000 for a Stormwater Grant Program to be administered by the Department of Ecology. The City applied for two projects: the Leslie Groves Stormwater Facility and the Canyon Terrace Stormwater Retrofit for two grants at approximately \$400,000. Mr. Rogalsky further explained that the Leslie Groves project would modify the Saint Street outfall by constructing a water quality treatment feature in Leslie Groves Park. The design has not been completed and requires review by the U.S. Army Corps of Engineers, Parks and Recreation Commission and City Council.

Commissioner Doran asked for location of the current outfall at Leslie Groves Park and Mr. Rogalsky responded that its on the rivershore near the treatment plant. More discussion ensued on the size of the drain area, type of mitigation, and anticipated length of construction project.

Commissioner Jones **moved** that Parks and Recreation Commission recommend to City Council to consider the proposed Stormwater Facility outfall upgrades at Leslie Groves Park, subject to additional review by the Parks and Recreation staff and Parks and Recreation Commission, related to the details of the design, construction and implementation of the stormwater drain system. Commissioner Bern **seconded** the motion. Motion carried.

3. Comprehensive Land Use Plan Amendment for City Wide Trails Map

Parks and Recreation Director Joe Schiessl presented the City Wide Trails Map as part of the 2012 Comprehensive Plan Amendment cycle. He further explained that the package was originally drafted by Rick Simon, City of Richland Development Services Manager. The City Council reviewed the draft 2012 Comprehensive Plan amendments at their September workshop and requested that the City Wide Trails Map, originally generated by the Parks Department and part of the 2012 Comprehensive Plan amendments cycle, be considered by the Parks and Recreation Commission. Inclusion of the map in the Comprehensive Land Use Plan may aid in its implementation in developing new areas of the city, or in grant funding opportunities to the state.

Chair Gutierrez questioned if any consideration had been given to the water trails to be included as part of the amendment. Mr. Schiessl responded that the City Wide Transportation Plan does not cover water and has not been considered and perhaps would be included at the plan's next cycle. Commissioner Doran asked if the comprehensive plan defined the Class I Trail and Mr. Schiessl indicated that they are 8' to 12' wide paved trails.

Commissioner Bern **moved** that the Parks and Recreation Commission recommend to City Council to approve the City Wide Trails Map as part of the 2012 Comprehensive Plan Amendment cycle. Commissioner **Johnson** seconded the motion. Motion carried.

4. Trail Connectivity on West Side of Little Badger Mountain

Parks and Recreation Manager Phil Pinard explained that the long range plan for the trail on top of Little Badger Mountain, on the south side of Falconcrest Subdivision, is to connect with the Badger Mountain Centennial Preserve and the Amon Basin Preserve. The City owns a 16 acre parcel of land adjacent to the east end of the plat of Falconcrest.

Mr. Pinard indicated that staff has been discussing with the property owner acquisition of a portion of the property as identified as Parcel #3. The current property owners are planning to subdivide the property into four lots, but are willing to sell some of the upper portion of the property which would provide much improved trail route as one leaves the Falconcrest Trail and enters the City property. The property owners are selling for \$18-20,000 per acre, up to five acres. Commissioner Jones asked where the funding would come from and Mr. Pinard indicated perhaps through partnerships with Friends of Badger Mountain, Benton County, Tapteal Greenway and Rivers to Ridges.

Mr. Pinard explained that no action is requested from the Commission, but Staff would like to receive direction from the Commission as to how much, if any, of Parcel #3 is important for the City to own. Staff will also discuss with the Commission the options for extending the trail to the Amon Basin. Commissioner Katipamula inquired as to what happens if the property is acquired and Mr. Pinard explained that the property acquisition gives more flexibility in locating the future trail and preserves more open space.

There was a general consensus for Staff to pursue funding opportunities.

5. Proposed Funding for Brantingham Park

Parks and Recreation Manager Phil Pinard presented the background on Brantingham Park and indicated that the City acquired the three acre park on the southeast corner of Westcliffe Boulevard and Gala Way, in July 2012. He also noted that it included a mandatory development schedule as follows:

- a. Meet with neighbors and develop park master plan by 8/31/13,
- b. Install irrigation system and hydro seed park by 11/30/13, and
- c. Install playground, benches and shade trees by 8/13/14.

Mr. Pinard noted that it is Staff's goal is to complete as much work as possible utilizing City Parks and Facilities crews to reduce the cost of park development. To meet the development schedule work will begin at the end of 2012 or early 2013. The requested \$20,000 would be used for disposal fees resulting from clearing and grubbing the site, purchasing and installing soil additives, irrigation supplies and other related labor and supplies necessary as the initial basic improvements to the park. Also, Staff met with representatives of the three adjacent neighborhoods on September 19, 2012, to discuss elements of the master plan.

Discussion ensued on the types of turf to be used, time commitment, and requirements to have playfields.

Vice Chair Jones **moved** that Parks and Recreation Commission recommend to City Council to authorize expenditure of up to \$20,000 of Park District 5 Funds for Brantingham Park improvements. Commissioner Doran **seconded** the motion. Motion carried.

5. Proposed Funding for Keene Road Trail Landscaping

Parks and Recreation Manager Phil Pinard described the area along the Keene Road Trail that abuts the subdivision where the park land between the subdivision fence and trail is bare dirt and weeds. He further explained that it is proposed to create Tier 1 Landscaping in these areas, per the adopted Keene Road Trail Corridor Landscape Master Plan. The Tier 1 Landscaping standard calls for different colors of crushed basalt rock placed at a minimum of four inches deep.

Vice Chair Jones inquired about the use of native plant vegetation and Mr. Pinard indicated that water is not readily available but including native plants would be considered. Mr. Pinard explained that the funds would purchase landscaping materials (crushed basalt rock) and hauling and placing of boulders. Volunteers would be utilized to spread the basalt rock and that there are four volunteer groups interested in assisting with this project and the project would be placed on the 2013 Sharefest project list.

Commissioner Doran **moved** that the Parks and Recreation Commission recommend to City Council to authorize expenditure of \$15,000 of Undesignated Park Reserve Funds for landscaping along the Keene Road Trail. Commissioner Katipamula **seconded** the motion. Motion carried.

PARKS AND RECREATION COMMISSION COMMENTS:

- **Commissioner Doran** – Attended an Arts Commission meeting and Mid-Columbia Forest Council meeting. She added that Basin Bloomers are donating a tree which would be discussed at a future date.
- **Commissioner Bern** – Volunteered for the Washington State bike/pedestrian count.
- **Chair Gutierrez** – Reminded all to provide feedback on the 2013 goals by October 15, WCIA Workshop on October 17, parks tour on October 27, and Parks and Recreation Commission Workshop on October 25.

Council Member Kent reminded Commissioners that there is a City Town Hall Meeting on October 25 at the Richland Library. Chair Gutierrez suggested moving the workshop to October 24, 2012, 6:00 pm.

The meeting was adjourned at 8:56 pm.

Reviewed by: Joe Schiessl, Parks and Recreation Director

Approved by: _____
Chair Gutierrez, Richland Parks and Recreation

MEMORANDUM

COMMUNITY DEVELOPMENT DEPARTMENT

Development Services Division

TO: Parks & Recreation Commission

FROM: Jeff Rolph, Senior Planner

SUBJ.: Shoreline Management Development Plan Review – Construction of a Private Dock at 2644 Harris Ave. (SM2-2012)

DATE: November 8, 2012

RECOMMENDATION

Staff recommends that the Parks and Recreation Commission review the proposed development plans and forward your recommendation with any comments to the Planning Commission prior to their public hearing on the proposal at their November 28, 2012 meeting.

MOTION FOR CONSIDERATION

I move to recommend that the Planning Commission approve the shoreline development plans (SM2-2012) to allow for construction of a private boat dock at 2644 Harris Avenue.

BACKGROUND

Craig and Karen Walton have submitted an application for a shoreline management substantial development permit to allow for construction of a private boat dock in the Columbia River adjacent to their home at 2644 Harris Avenue in North Richland. As the fair market value (including material and labor) of the dock construction will exceed \$10,000, the project is not exempt from the shoreline management substantial development permit review process. A public hearing and review of the proposal is scheduled for the November 28, 2012 meeting of the Planning Commission.

Any substantial development within 200-feet of the ordinary high water mark of the Columbia and Yakima Rivers is subject to the provisions of the State Shoreline Management Act. The City's adopted Shoreline Master Plan, Richland Municipal Code (RMC) Title 26, provides for Park and Recreation Commission review and recommendation on all shoreline permit applications prior to the Planning Commission conducting a public hearing and taking action on the application.

PROJECT DESCRIPTION

The project involves construction of a 160 square foot private dock with a 4-foot wide by 44-foot long access ramp, a 4-foot by 4-foot concrete pier to anchor the access ramp, a dock anchoring system consisting of either 4 piles or alternatively 13 submerged concrete blocks and a set of 4-foot wide concrete steps with hand rail extending from the applicants rear yard down to the Corps of Engineers property.

The proposed dock has been designed to meet the strict requirements of the Corps of Engineers McNary Shoreline Management Plan that was approved in January of 2012. The applicant, in addition to the shoreline permit from the City will be required to obtain permits and approvals from the Corps of Engineers, Washington Department of Fish and Wildlife and Washington Department of Natural Resources.

The Corps of Engineers McNary Shoreline Management Plan is available for review at the following link:

<http://www.nww.usace.army.mil/Missions/Projects/McNaryShorelineManagementPlan.aspx> .

The Plan addresses rules and regulations including requirements for permitting private use of public lands managed by the Corps of Engineers. The plan was approved after several years of public meetings. The new design criteria that will be reviewed and approved by the Corps of Engineers includes specific requirements for cultural resource protection, restoration of riparian habitat if impacted and specific construction requirements for docks and associated access ramps.

The area located between Ferry Landing Road on the south and Sprout Road on the north is the only area within the McNary pool in Richland that is designated a "Limited Development Area" where individual private boat dock facilities would be allowed. Many of the docks in this area are considered "grandfathered" as they were already present prior to the development of the initial McNary Lakeshore Management Plan in 1980.

CONFORMANCE TO SHORELINE PROGRAM

The shoreline in the vicinity of the project has been classified as an Urban Shoreline Environment. The regulations for development in an Urban environment are intended to insure optimum utilization of shorelines in a manner that enhances and maintains the shorelines for a multiplicity of urban uses and provides for maximum public access and circulation. The proposed dock is considered a permitted use in an Urban Shoreline Environment.

The shoreline in this area is steeply sloped with no formal public access improvements currently existing or planned. The improvements authorized by the Corps of Engineers will limit the actual amount of private improvements that can occur on the Corps owned property. Compliance with the conditions of all required permits and approvals should ensure that the proposed private dock will have negligible impact on the shoreline resources in the project vicinity.

Attachments

1. Vicinity Map
2. Oblique Aerial View
3. JARPA Application with Development Plans



SM2-2012 VICINITY MAP

SM2-2012





WASHINGTON STATE

Joint Aquatic Resources Permit Application (JARPA) Form^{1,2}

USE BLACK OR BLUE INK TO ENTER ANSWERS IN THE WHITE SPACES BELOW.



US Army Corps
of Engineers
Seattle District

AGENCY USE ONLY

Date received: _____

Agency reference #: _____

Tax Parcel #(s): _____

Part 1–Project Identification

1. Project Name (A name for your project that you create. Examples: Smith's Dock or Seabrook Lane Development) [\[help\]](#)

Craig and Karen Walton's Private Dock

Part 2–Applicant

The person and/or organization responsible for the project. [\[help\]](#)

2a. Name (Last, First, Middle)			
Walton, Craig and Karen			
2b. Organization (If applicable)			
2c. Mailing Address (Street or PO Box)			
2644 Harris Ave.			
2d. City, State, Zip			
Richland, WA 99354			
2e. Phone (1)	2f. Phone (2)	2g. Fax	2h. E-mail
509-521-8139	509-375-4996	()	candkwalton@charter.net

¹ Additional forms may be required for the following permits:

- If your project may qualify for Department of the Army authorization through a Regional General Permit (RGP), contact the U.S. Army Corps of Engineers for application information (206) 764-3495.
- If your project might affect species listed under the Endangered Species Act, you will need to fill out a Specific Project Information Form (SPIF) or prepare a Biological Evaluation. Forms can be found at http://www.nws.usace.army.mil/PublicMenu/Menu.cfm?sitename=REG&pagename=mainpage_ESA
- Not all cities and counties accept the JARPA for their local Shoreline permits. If you need a Shoreline permit, contact the appropriate city or county government to make sure they accept the JARPA.

² To access an online JARPA form with [\[help\]](#) screens, go to http://www.epermitting.wa.gov/site/alias_resourcecenter/jarpa_jarpa_form/9984/jarpa_form.aspx.

For other help, contact the Governor's Office of Regulatory Assistance at 1-800-917-0043 or help@ora.wa.gov.

Part 3–Authorized Agent or Contact

Person authorized to represent the applicant about the project. (Note: Authorized agent(s) must sign 11b of this application.) [\[help\]](#)

3a. Name (Last, First, Middle)			
Batayola, Christine Engan			
3b. Organization (If applicable)			
Harms Engineering, Inc.			
3c. Mailing Address (Street or PO Box)			
1632 W. Sylvester St.			
3d. City, State, Zip			
Pasco, WA 99301			
3e. Phone (1)	3f. Phone (2)	3g. Fax	3h. E-mail
(509) 547-2679	(509) 308-0805	(509) 547-3767	christine@harmsengineering.com

Part 4–Property Owner(s)

Contact information for people or organizations owning the property(ies) where the project will occur. Consider both **upland and aquatic** ownership because the upland owners may not own the adjacent aquatic land. [\[help\]](#)

- ☒ Same as applicant. (Skip to Part 5.)
- ☐ Repair or maintenance activities on existing rights-of-way or easements. (Skip to Part 5.)
- ☐ There are multiple upland property owners. Complete the section below and fill out JARPA Attachment A for each additional property owner.
- ☒ Your project is on Department of Natural Resources (DNR)-managed aquatic lands. If you don't know, contact the DNR at (360) 902-1100 to determine aquatic land ownership. If yes, complete JARPA Attachment E to apply for the Aquatic Use Authorization.

4a. Name (Last, First, Middle)			
4b. Organization (If applicable)			
4c. Mailing Address (Street or PO Box)			
4d. City, State, Zip			
4e. Phone (1)	4f. Phone (2)	4g. Fax	4h. E-mail
()	()	()	

Part 5–Project Location(s)

Identifying information about the property or properties where the project will occur. [\[help\]](#)

- ☐ There are multiple project locations (e.g. linear projects). Complete the section below and use [JARPA Attachment B](#) for each additional project location.

5a. Indicate the type of ownership of the property. (Check all that apply.) [help]			
<input type="checkbox"/> Private			
<input checked="" type="checkbox"/> Federal			
<input checked="" type="checkbox"/> Publicly owned (state, county, city, special districts like schools, ports, etc.)			
<input type="checkbox"/> Tribal			
<input checked="" type="checkbox"/> Department of Natural Resources (DNR) – managed aquatic lands (Complete JARPA Attachment E)			
5b. Street Address (Cannot be a PO Box. If there is no address, provide other location information in 5p.) [help]			
Between parcel 126081010451062 and the Columbia River (Lake Wallula)			
5c. City, State, Zip (If the project is not in a city or town, provide the name of the nearest city or town.) [help]			
Richland, WA 99301			
5d. County [help]			
Benton			
5e. Provide the section, township, and range for the project location. [help]			
¼ Section	Section	Township	Range
NE and NW	26 and 25	10N	28E
5f. Provide the latitude and longitude of the project location. [help]			
• Example: 47.03922 N lat. / -122.89142 W long. (Use decimal degrees - NAD 83)			
46.3286N, -119.2612W (NAD83)			
5g. List the tax parcel number(s) for the project location. [help]			
• The local county assessor's office can provide this information.			
Portion on which the concrete pier is located is not parceled. It is in front of parcel 126081010451062			
5h. Contact information for all adjoining property owners. (If you need more space, use JARPA Attachment C.) [help]			
Name	Mailing Address	Tax Parcel # (if known)	
Craig and Karen Walton	2644 Harris Ave. Richland, WA 99354	126081010451062	
Katie Sako	2638 Harris Ave. Richland, WA 99354	126081020000005	
Charles and Shu-Mei Li	1 Sprout Rd. Richland, WA 99354	126081020000007	

5i. List all wetlands on or adjacent to the project location. [help]
None
5j. List all waterbodies (other than wetlands) on or adjacent to the project location. [help]
Columbia River (Lake Wallula)
5k. Is any part of the project area within a 100-year floodplain? [help]
<input checked="" type="checkbox"/> Yes <input type="checkbox"/> No <input type="checkbox"/> Don't know Floating Dock is on River, FIRM Panel 535533 0010 E, attached
5l. Briefly describe the vegetation and habitat conditions on the property. [help]
Mixed vegetation, mainly grasses. Trees on neighboring properties. See attached photos.
5m. Describe how the property is currently used. [help]
Undeveloped
5n. Describe how the adjacent properties are currently used. [help]
Housing since 1961.
5o. Describe the structures (above and below ground) on the property, including their purpose(s) and current condition. [help]
N/A
5p. Provide driving directions from the closest highway to the project location, and attach a map. [help]
From I-182 in Richland take exit 5 for George Washington Way and head north on George Washington Way for 5.9 miles, go right on Sprout Rd, go right onto Harris Ave., 2644 Harris Ave. is on the left. Dock will be built between 2644 Harris Ave. and the river.

Part 6—Project Description

6a. Briefly summarize the overall project. You can provide more detail in 6b. [\[help\]](#)

Construct concrete stairs, a 160 sf private dock, a 4 ft. x 4 ft. concrete pier, a 4 ft. x 40 ft. ramp, and 4 ea piles (alternate design uses 13 submerged concrete blocks rather than the piles). Provide plant mitigation per McNary Shoreline Management Plan.

6b. Describe the purpose of the project and why you want or need to perform it. [\[help\]](#)

Project is to provide recreational access to the Columbia River.

6c. Indicate the project category. (Check all that apply) [\[help\]](#)

- ☐ Commercial
 ☐ Residential
 ☐ Institutional
 ☐ Transportation
 ☒ Recreational
☐ Maintenance
 ☐ Environmental Enhancement

6d. Indicate the major elements of your project. (Check all that apply) [\[help\]](#)

- | | | | |
|--|---|---|--|
| <input type="checkbox"/> Aquaculture
<input type="checkbox"/> Bank Stabilization
<input type="checkbox"/> Boat House
<input type="checkbox"/> Boat Launch
<input type="checkbox"/> Boat Lift
<input type="checkbox"/> Bridge
<input type="checkbox"/> Bulkhead
<input type="checkbox"/> Buoy
<input type="checkbox"/> Channel Modification | <input type="checkbox"/> Culvert
<input type="checkbox"/> Dam / Weir
<input type="checkbox"/> Dike / Levee / Jetty
<input type="checkbox"/> Ditch
<input checked="" type="checkbox"/> Dock / Pier
<input type="checkbox"/> Dredging
<input type="checkbox"/> Fence
<input type="checkbox"/> Ferry Terminal
<input type="checkbox"/> Fishway | <input type="checkbox"/> Float
<input type="checkbox"/> Floating Home
<input type="checkbox"/> Geotechnical Survey
<input type="checkbox"/> Land Clearing
<input type="checkbox"/> Marina / Moorage
<input type="checkbox"/> Mining
<input type="checkbox"/> Outfall Structure
<input checked="" type="checkbox"/> Piling/Dolphin
<input type="checkbox"/> Raft | <input type="checkbox"/> Retaining Wall (upland)
<input type="checkbox"/> Road
<input type="checkbox"/> Scientific Measurement Device
<input checked="" type="checkbox"/> Stairs
<input type="checkbox"/> Stormwater facility
<input type="checkbox"/> Swimming Pool
<input type="checkbox"/> Utility Line |
|--|---|---|--|

☐ Other:

<p>6e. Describe how you plan to construct each project element checked in 6d. Include specific construction methods and equipment to be used. [help]</p> <ul style="list-style-type: none"> Identify where each element will occur in relation to the nearest waterbody. Indicate which activities are within the 100-year floodplain.
<p>Stairs: To be constructed on shore from existing retaining wall to approximately 50 ft from the Ordinary High Water Mark. The construction will utilize hand tools.</p> <p>Pier: To be constructed on the shore, 10 ft. landward from the Ordinary High Water Mark. The construction will utilize hand tools.</p> <p>Pilings: To be placed in the river using a vibratory hammer (not impact hammer). (Alternate design eliminates piers and instead places concrete blocks on bottom as the anchor for the floating dock.)</p> <p>Dock: Floating dock to be constructed and assembled off-site and floated to the project location.</p>
<p>6f. What are the anticipated start and end dates for project construction? (Month/Year) [help]</p> <ul style="list-style-type: none"> If the project will be constructed in phases or stages, use JARPA Attachment D to list the start and end dates of each phase or stage.
<p>Construction window established by McNary Shoreline Management Plan, earliest window is noted: Start date: <u>Nov 2012</u> End date: <u>Feb 2013</u> <input type="checkbox"/> See JARPA Attachment D</p>
<p>6g. Fair market value of the project, including materials, labor, machine rentals, etc. [help]</p>
<p>\$30,000</p>
<p>6h. Will any portion of the project receive federal funding? [help]</p> <ul style="list-style-type: none"> If yes, list each agency providing funds.
<p><input type="checkbox"/> Yes <input checked="" type="checkbox"/> No <input type="checkbox"/> Don't know</p>

Part 7–Wetlands: Impacts and Mitigation

☐ Check here if there are wetlands or wetland buffers on or adjacent to the project area.
 (If there are none, skip to Part 8.) [\[help\]](#)

<p>7a. Describe how the project has been designed to avoid and minimize adverse impacts to wetlands. [help]</p> <p><input type="checkbox"/> Not applicable</p>
<p>7b. Will the project impact wetlands? [help]</p> <p><input type="checkbox"/> Yes <input type="checkbox"/> No <input type="checkbox"/> Don't know</p>
<p>7c. Will the project impact wetland buffers? [help]</p> <p><input type="checkbox"/> Yes <input type="checkbox"/> No <input type="checkbox"/> Don't know</p>

7d. Has a wetland delineation report been prepared? [\[help\]](#)

- If Yes, submit the report, including data sheets, with the JARPA package.

☐ Yes ☐ No

7e. Have the wetlands been rated using the Western Washington or Eastern Washington Wetland Rating System? [\[help\]](#)

- If Yes, submit the wetland rating forms and figures with the JARPA package.

☐ Yes ☐ No ☐ Don't know

7f. Have you prepared a mitigation plan to compensate for any adverse impacts to wetlands? [\[help\]](#)

- If Yes, submit the plan with the JARPA package and answer 7g.
- If No, or Not applicable, explain below why a mitigation plan should not be required.

☐ Yes ☐ No ☐ Not applicable

7g. Summarize what the mitigation plan is meant to accomplish, and describe how a watershed approach was used to design the plan. [\[help\]](#)

7h. Use the table below to list the type and rating of each wetland impacted, the extent and duration of the impact, and the type and amount of mitigation proposed. Or if you are submitting a mitigation plan with a similar table, you can state (below) where we can find this information in the plan. [\[help\]](#)

Activity (fill, drain, excavate, flood, etc.)	Wetland Name ¹	Wetland type and rating category ²	Impact area (sq. ft. or Acres)	Duration of impact ³	Proposed mitigation type ⁴	Wetland mitigation area (sq. ft. or acres)

¹ If no official name for the wetland exists, create a unique name (such as "Wetland 1"). The name should be consistent with other project documents, such as a wetland delineation report.

² Ecology wetland category based on current Western Washington or Eastern Washington Wetland Rating System. Provide the wetland rating forms with the JARPA package.

³ Indicate the days, months or years the wetland will be measurably impacted by the activity. Enter "permanent" if applicable.

⁴ Creation (C), Re-establishment/Rehabilitation (R), Enhancement (E), Preservation (P), Mitigation Bank/In-lieu fee (B)

Page number(s) for similar information in the mitigation plan, if available: _____

7i. For all filling activities identified in 7h, describe the source and nature of the fill material, the amount in cubic yards that will be used, and how and where it will be placed into the wetland. [\[help\]](#)

7j. For all excavating activities identified in 7h, describe the excavation method, type and amount of material in cubic yards you will remove, and where the material will be disposed. [help]

Part 8—Waterbodies (other than wetlands): Impacts and Mitigation

In Part 8, “waterbodies” refers to non-wetland waterbodies. (See Part 7 for information related to wetlands.) [\[help\]](#)

☒ Check here if there are waterbodies on or adjacent to the project area. (If there are none, skip to Part 9.)

8a. Describe how the project is designed to avoid and minimize adverse impacts to the aquatic environment. [\[help\]](#)

☐ Not applicable

Dock is designed and to be constructed in accordance with the McNary Shoreline Management Plan, dated Jan 2012. Docks designed and built per the Plan are presumed to not jeopardize listed species or critical habitats.

8b. Will your project impact a waterbody or the area around a waterbody? [\[help\]](#)

☒ Yes ☐ No

8c. Have you prepared a mitigation plan to compensate for the project's adverse impacts to non-wetland waterbodies? [\[help\]](#)

- If Yes, submit the plan with the JARPA package and answer 8d.
- If No, or Not applicable, explain below why a mitigation plan should not be required.

☒ Yes ☐ No ☐ Not applicable

The McNary Shoreline Management Plan, dated Jan 2012, includes mitigation requirements for new docks. The specific planting plan for this dock is being developed with input from the Army Corps of Engineers and the Department of Fish and Wildlife.

8d. Summarize what the mitigation plan is meant to accomplish. Describe how a watershed approach was used to design the plan.

- If you already completed 7g you do not need to restate your answer here. [\[help\]](#)

Reduce any impacts to listed species and mitigate impacts to shoreline vegetation.

8e. Summarize impact(s) to each waterbody in the table below. [\[help\]](#)

Activity (clear, dredge, fill, pile drive, etc.)	Waterbody name ¹	Impact location ²	Duration of impact ³	Amount of material (cubic yards) to be placed in or removed from waterbody	Area (sq. ft. or linear ft.) of waterbody directly affected
Pile Drive	Lake Wallula	In	Permanent	N/A	5.6 sf
Clear for Concrete Pier	Lake Wallula	Adjacent, 10 ft.	Permanent	N/A	16 sf
Clear for Stairs	Lake Wallula	50 ft	Permanent	N/A	60 sf

¹ If no official name for the waterbody exists, create a unique name (such as "Stream 1") The name should be consistent with other documents provided.

² Indicate whether the impact will occur in or adjacent to the waterbody. If adjacent, provide the distance between the impact and the waterbody and indicate whether the impact will occur within the 100-year flood plain.

³ Indicate the days, months or years the waterbody will be measurably impacted by the work. Enter "permanent" if applicable.

8f. For all activities identified in 8e, describe the source and nature of the fill material, amount (in cubic yards) you will use, and how and where it will be placed into the waterbody. [\[help\]](#)

No fill.

8g. For all excavating or dredging activities identified in 8e, describe the method for excavating or dredging, type and amount of material you will remove, and where the material will be disposed. [\[help\]](#)

Hand-held auger or small excavator for stair foundations. Hand dig (shovels) for the concrete pier. Material removed will be placed around the pier and stairs. Approximately 5 cy of material will be excavated.

Part 9—Additional Information

Any additional information you can provide helps the reviewer(s) understand your project. Complete as much of this section as you can. It is ok if you cannot answer a question.

9a. If you have already worked with any government agencies on this project, list them below. [\[help\]](#)

Agency Name	Contact Name	Phone	Most Recent Date of Contact
DFW	Eric Bartrand	(509) 457-9310	6/21/2012
DNR	Shane Early	(509) 925-0960	6/20/2012
Coast Guard	Tim Westcott	(509) 220-7285	6/20/2012
Army Corps of Engr.	Kye Carpenter	(509) 543-6062	6/21/2012

9b. Are any of the wetlands or waterbodies identified in Part 7 or Part 8 of this JARPA on the Washington Department of Ecology's 303(d) List? [\[help\]](#)

- If Yes, list the parameter(s) below.
- If you don't know, use Washington Department of Ecology's Water Quality Assessment tools at: <http://www.ecy.wa.gov/programs/wq/303d/>.

☐ Yes ☒ No

9c. What U.S. Geological Survey Hydrological Unit Code (HUC) is the project in? [\[help\]](#)

- Go to <http://cfpub.epa.gov/surf/locate/index.cfm> to help identify the HUC.

17020016

9d. What Water Resource Inventory Area Number (WRIA #) is the project in? [\[help\]](#)

- Go to <http://www.ecy.wa.gov/services/gis/maps/wria/wria.htm> to find the WRIA #.

40

9e. Will the in-water construction work comply with the State of Washington water quality standards for turbidity? [\[help\]](#)

- Go to <http://www.ecy.wa.gov/programs/wq/swqs/criteria.html> for the standards.

☒ Yes ☐ No ☐ Not applicable

9f. If the project is within the jurisdiction of the Shoreline Management Act, what is the local shoreline environment designation? [\[help\]](#)

- If you don't know, contact the local planning department.
- For more information, go to: http://www.ecy.wa.gov/programs/sea/sma/laws_rules/173-26/211_designations.html.

☐ Rural ☒ Urban ☐ Natural ☐ Aquatic ☐ Conservancy ☐ Other _____

9g. What is the Washington Department of Natural Resources Water Type? [\[help\]](#)

- Go to http://www.dnr.wa.gov/BusinessPermits/Topics/ForestPracticesApplications/Pages/fp_watertyping.aspx for the Forest Practices Water Typing System.

☒ Shoreline ☐ Fish ☐ Non-Fish Perennial ☐ Non-Fish Seasonal

9h. Will this project be designed to meet the Washington Department of Ecology's most current stormwater manual? [\[help\]](#)

- If No, provide the name of the manual your project is designed to meet.

☒ Yes ☐ No

Name of manual:

9i. Does the project site have known contaminated sediment? [\[help\]](#)

- If Yes, please describe below.

☐ Yes ☒ No

9j. If you know what the property was used for in the past, describe below. [\[help\]](#)

9k. Has a cultural resource (archaeological) survey been performed on the project area? [\[help\]](#)

- If Yes, attach it to your JARPA package.

☐ Yes ☒ No An archeological survey will be completed as a requirement for construction on Federal land.

9l. Name each species listed under the federal Endangered Species Act that occurs in the vicinity of the project area or might be affected by the proposed work. [\[help\]](#)

See attached list/excerpt from Environment Assessment done for the McNary Shoreline Management Plan and the list provided by Eric Bartrand of the Dept. of Fish and Wildlife.

9m. Name each species or habitat on the Washington Department of Fish and Wildlife's Priority Habitats and Species List that might be affected by the proposed work. [\[help\]](#)

See attached list/excerpt from Environment Assessment done for the McNary Shoreline Management Plan and the list provided by Eric Bartrand of the Dept. of Fish and Wildlife.

Part 10–SEPA Compliance and Permits

Use the resources and checklist below to identify the permits you are applying for.

- Online Project Questionnaire at <http://apps.ecy.wa.gov/opas/>.
- Governor's Office of Regulatory Assistance at (800) 917-0043 or help@ora.wa.gov.
- For a list of addresses to send your JARPA to, click on [agency addresses for completed JARPA](#).

10a. Compliance with the State Environmental Policy Act (SEPA). (Check all that apply.) [\[help\]](#)

- For more information about SEPA, go to www.ecy.wa.gov/programs/sea/sepa/e-review.html.

☐ A copy of the SEPA determination or letter of exemption is included with this application.

☒ A SEPA determination is pending with City of Richland (lead agency). The expected decision date is to be determined. City may adopt NEPA FONSI done as part of McNary Shoreline Management Plan as the SEPA document. FONSI is attached.

☐ I am applying for a Fish Habitat Enhancement Exemption. (Check the box below in 10b.) [\[help\]](#)

☐ This project is exempt (choose type of exemption below).

☐ Categorical Exemption. Under what section of the SEPA administrative code (WAC) is it exempt?

☐ Other: _____

☐ SEPA is pre-empted by federal law.

10b. Indicate the permits you are applying for. (Check all that apply.) [\[help\]](#)

LOCAL GOVERNMENT

Local Government Shoreline permits:

- ☒ Substantial Development ☐ Conditional Use ☐ Variance
☐ Shoreline Exemption Type (explain): _____

Other city/county permits:

- ☐ Floodplain Development Permit ☐ Critical Areas Ordinance

STATE GOVERNMENT

Washington Department of Fish and Wildlife:

- ☒ Hydraulic Project Approval (HPA) ☐ Fish Habitat Enhancement Exemption – [Attach Exemption Form](#)

Effective July 10, 2012, you must submit a check for \$150 to Washington Department of Fish and Wildlife, unless your project qualifies for an exemption or alternative payment method below. **Do not send cash.**

Check the appropriate boxes:

- ☒ \$150 check enclosed. (Check # _____)
Attach check made payable to Washington Department of Fish and Wildlife.
- ☐ Charge to billing account under agreement with WDFW. (Agreement # _____)
- ☐ My project is exempt from the application fee. (Check appropriate exemption)
- ☐ HPA processing is conducted by applicant-funded WDFW staff.
(Agreement # _____)
 - ☐ Mineral prospecting and mining.
 - ☐ Project occurs on farm and agricultural land.
(Attach a copy of current land use classification recorded with the county auditor, or other proof of current land use.)
 - ☐ Project is a modification of an existing HPA originally applied for, prior to July 10, 2012.
(HPA # _____)

Washington Department of Natural Resources:

- ☒ Aquatic Use Authorization
Complete [JARPA Attachment E](#) and submit a check for \$25 payable to the Washington Department of Natural Resources.
Do not send cash.

Washington Department of Ecology:

- ☐ Section 401 Water Quality Certification

FEDERAL GOVERNMENT

United States Department of the Army permits (U.S. Army Corps of Engineers):

- ☐ Section 404 (discharges into waters of the U.S.) ☐ Section 10 (work in navigable waters)

United States Coast Guard permits:

- ☐ General Bridge Act Permit ☐ Private Aids to Navigation (for non-bridge projects)

Part 11—Authorizing Signatures

Signatures are required before submitting the JARPA package. The JARPA package includes the JARPA form, project plans, photos, etc. [\[help\]](#)

11a. Applicant Signature (required) [\[help\]](#)

I certify that to the best of my knowledge and belief, the information provided in this application is true, complete, and accurate. I also certify that I have the authority to carry out the proposed activities, and I agree to start work only after I have received all necessary permits.

I hereby authorize the agent named in Part 3 of this application to act on my behalf in matters related to this application. _____ (initial)

By initialing here, I state that I have the authority to grant access to the property. I also give my consent to the permitting agencies entering the property where the project is located to inspect the project site or any work related to the project. _____ (initial)

Applicant Printed Name

Applicant Signature

Date

11b. Authorized Agent Signature [\[help\]](#)

I certify that to the best of my knowledge and belief, the information provided in this application is true, complete, and accurate. I also certify that I have the authority to carry out the proposed activities and I agree to start work only after all necessary permits have been issued.

Christie Batayola
Authorized Agent Printed Name

Christie Batayola
Authorized Agent Signature

9/12/12
Date

11c. Property Owner Signature (if not applicant). [\[help\]](#)

Not required if project is on existing rights-of-way or easements.

I consent to the permitting agencies entering the property where the project is located to inspect the project site or any work. These inspections shall occur at reasonable times and, if practical, with prior notice to the landowner.

Property Owner Printed Name

Property Owner Signature

Date

18 U.S.C §1001 provides that: Whoever, in any manner within the jurisdiction of any department or agency of the United States knowingly falsifies, conceals, or covers up by any trick, scheme, or device a material fact or makes any false, fictitious, or fraudulent statements or representations or makes or uses any false writing or document knowing same to contain any false, fictitious, or fraudulent statement or entry, shall be fined not more than \$10,000 or imprisoned not more than 5 years or both.

If you require this document in another format, contact the Governor's Office of Regulatory Assistance (ORA) at (800) 917-0043. People with hearing loss can call 711 for Washington Relay Service. People with a speech disability can call (877) 833-6341. ORA publication number: ENV-019-09 rev. 06-12

CRAIG AND KAREN WALTON
2644 HARRIS AVE
SP #451 LOT 6B
PARCEL 126081010451062

KATIE SAKO
2638 HARRIS AVE
COLUMBIA TERRACE LOT #5
PARCEL 126081020000005

CHARLES AND SHU-MEI LI
1 SPROUT RD
COLUMBIA TERRACE LOT #7
PARCEL 126081020000007

NEW 4' WIDE STAIRS
W/42" TALL HANDRAIL
BY OTHERS
4' WIDE UNIMPROVED
PATH

4'x4'x4' CONCRETE PIER
5TH WHEEL HINGE
W/TRANSITION PLATE

RIVER LEVEL ON
08-17-2012

COLUMBIA RIVER
(LAKE WALLULA)
DIRECTION
OF FLOW

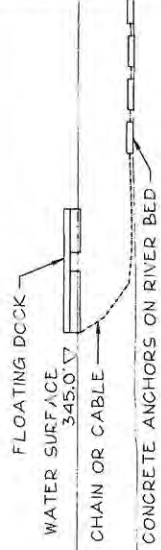
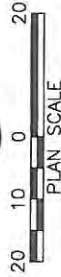
4' WIDE PIANO HINGE
W/TRANSITION PLATE

ONE ROW OF 6 EA
CONCRETE ANCHORS
SEE DETAIL SHEET C3

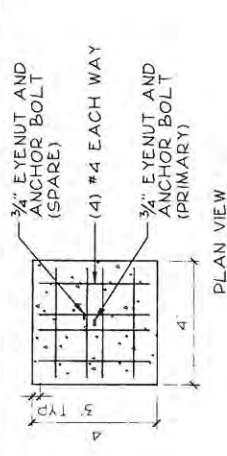
3/8" STAINLESS STEEL CABLE
TYPE 316 6x19-37 OR
3/8" GRADE 80 OR BETTER CHAIN

ONE ROW OF 7 EA
CONCRETE ANCHORS
SEE DETAIL SHEET C3

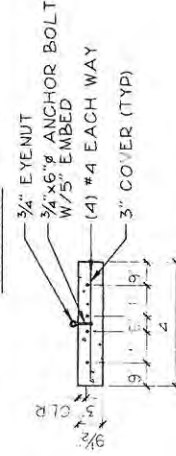
- ### NOTES
1. AT OWNER'S OPTION CONCRETE ANCHORS MAY BE USED IN LIEU OF PILES.
 2. GRATING AND FLOAT SIZES ARE UNCHANGED.
 3. HINGES AND LENGTH OF RAMP ARE MODIFIED AS SHOWN.



DOCK SECTION
SCALE: 1"=20'



PLAN VIEW



ELEVATION VIEW

CONCRETE ANCHOR
SCALE: 1"=20'



ALTERNATE ANCHORING PLAN
SCALE: 1"=20'

HARMS ENGINEERING, INC.
1632 W Sylvester, Pasco, WA 99352
Phone (509) 547-2679 Fax (509) 547-3787
Web Site: www.harmsengineering.com
Email: info@harmsengineering.com
Designed By: C. BAYAROLA
Drawn By: M. CLARK
File Name: 12-102-001-101
Revision: 12-2012 9:27:32 AM

32
YEARS OF
EXCELLENCE

Rev	Date	Description
1	08-22-2012	DOCK SECTION

WALTON FLOATING DOCK
ALTERNATE ANCHORING PLAN
CRAIG AND KAREN WALTON
2644 HARRIS AVE. RICHLAND, WA 99352
CRAIG WALTON (509) 521-8139

08-29-2012
Project Number
12-102-1B
Sheet Number
3

VICINITY MAP

REFERENCE MATERIALS

1. TOPOGRAPHICAL SURVEY, PROJECT #12-204
RECEIVED AUGUST 21, 2012
WORLEY SURVEYING SERVICE, INC, KENNEWICK, WA

DATUM/BENCHMARK

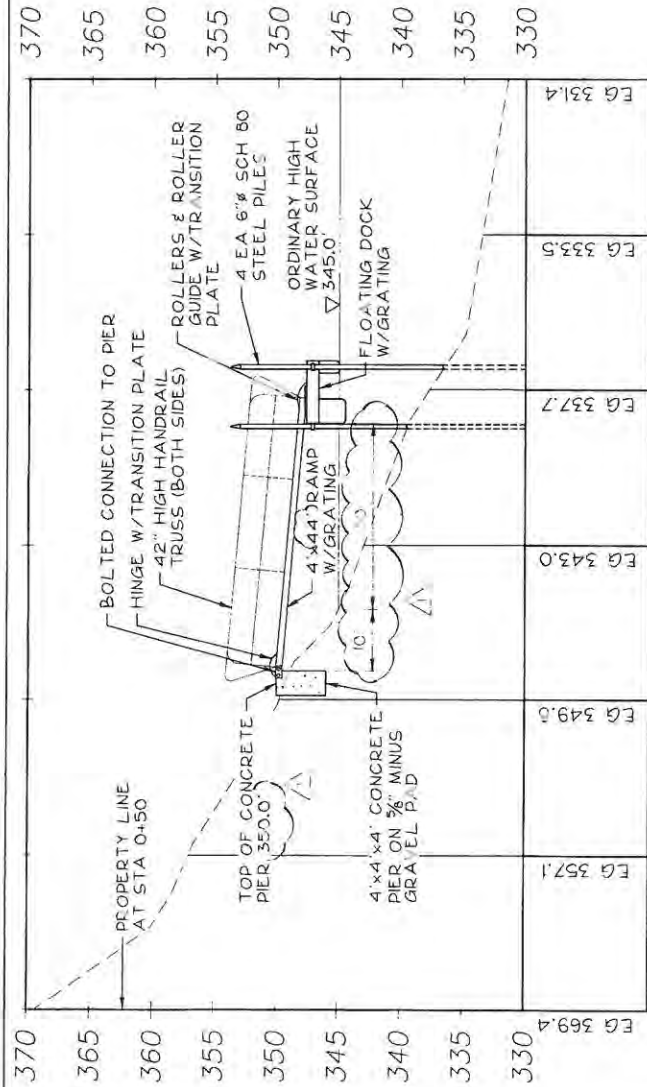
DATUM: CITY OF RICHLAND NGVD 1929
BENCHMARK: INTERSECTION MONUMENT ELEVATIONS,
PAGE 50, 51 OF HARRIS AVE AND SPROUT RD,
ELEVATION 377.74'

DOCK SITE PLAN

SCALE: 1"=20'

DOCK SECTION

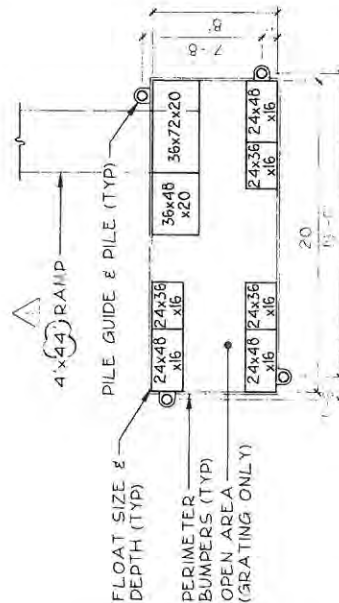
SCALE: 1"=20'



0+50 1+00 1+50 2+00

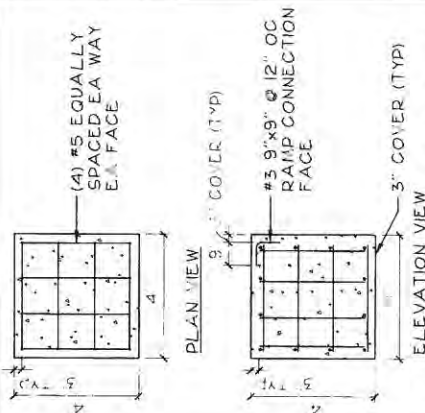
PROFILE

SCALE: 1"=20' (H), 1"=50' (V)



DOCK FLOAT PLAN

SCALE: 1/8"=1'-0"



CONC PIER REINFORCING

SCALE: 1/8"=1'-0"

NOTES

- GENERAL:**
DOCK TO MEET ALL REQUIREMENTS OF THE MCNARY SHORELINE MANAGEMENT PLAN, JANUARY 2012, APPENDIX B: DOCK DESIGN CRITERIA.
- DESIGN OF RAMP AND DOCK TO BE BY SUPPLIER.
 - UNCURD CONCRETE OR ITS BYPRODUCTS SHALL NOT BE ALLOWED IN CONTACT WITH THE RIVER.
 - DOCK TO BE BUILT OF MATERIALS THAT DO NOT LEACH PRESERVATIVES OR OTHER MATERIALS KNOWN TO BE DELETERIOUS TO FISH.
 - CONSTRUCTION LIMITED TO THAT ALLOWED BY PERMIT NOVEMBER 1 THROUGH FEBRUARY 28.
 - DOCK CONSTRUCTION TO BE MITIGATED PER MCNARY SHORELINE MANAGEMENT PLAN, JAN 2012, APPENDIX D: MITIGATION.
 - ENTIRE SURFACE OF RAMP AND DOCK TO BE COVERED WITH GRATING HAVING AT LEAST 50% OPEN AREA:
7.1. FIBERGRATE WITH 1"x4"x1" DEEP RECTANGULAR MESH, 69% OPEN AREA, WITH AQUAGRIP TEXTURED SURFACE AS MANUFACTURED BY GRATING PACIFIC.
7.2. STEEL DEK ECO SERIES, 60% OPEN AREA, PVC ENCAPSULATED STEEL, AS MANUFACTURED BY XCCENT MARINA.
7.3. OR ENGINEER APPROVED EQUAL.
 - DOCK FRAME TO BE GALVANIZED STEEL OR ALUMINUM WITH GRATING SUPPORTS AT A MAXIMUM OF 24" O.C.
 - FLOATS TO BE FULLY ENCAPSULATED FOAM, ACE ROTO-MOLD, SCOTTCO DISTRIBUTORS, OR ENGINEER APPROVED EQUAL. MAXIMUM FLOAT AREA TO BE 50% OF DOCK AREA.
 - RAMP TO BE 4' WIDE x 44' LONG ALUMINUM TRUSS ARCH WITH 42" HANDRAIL, HINGE ON BANK SIDE, ROLLERS ON DOCK SIDE AS MANUFACTURED BY WAHOO DOCKS OR ENGINEER APPROVED EQUAL.
 - PILES TO BE 6" SCH 80 STEEL, EMBED PILES A MINIMUM OF 15'-6" INTO RIVER BED. INSTALL CONED PILE CAP TO PREVENT BIRDS FROM PERCHING. 8" SCH 40 MAY BE USED IN LIEU OF 6" SCH 80. VIBRATORY PILE DRIVER ONLY - NO IMPACT DRIVING.

DESIGN CRITERIA:

- LIVE LOAD: 10 PEOPLE MAXIMUM / 10 PSF.
- RIVER FLOW: 7 FPS (100-YEAR RETURN), 4.75 FPS (3-YEAR RETURN).
- WIND: 85 MPH, EXP D.

DOCK AREA SUMMARY

DOCK AREA =	160 SF
FLOAT AREA =	72 SF
OPEN AREA =	88 SF
PERCENT OPEN AREA =	55%



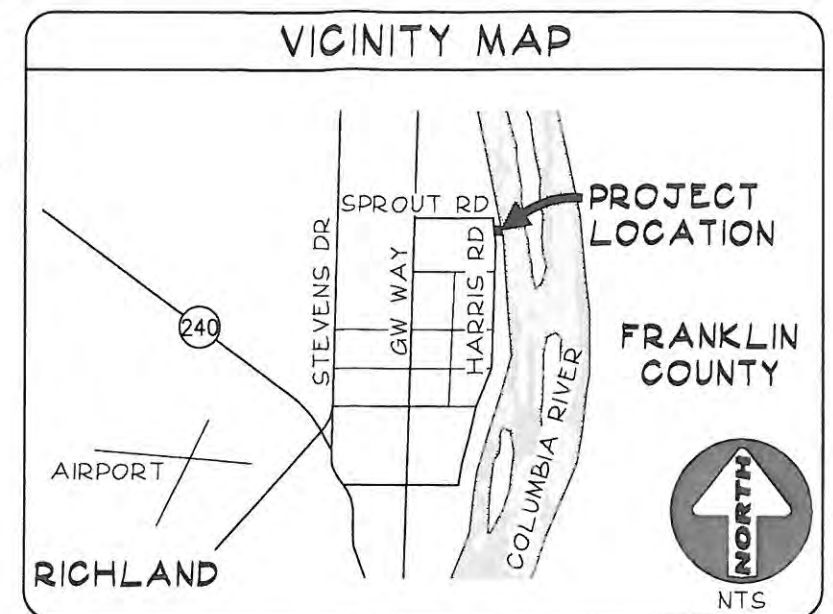
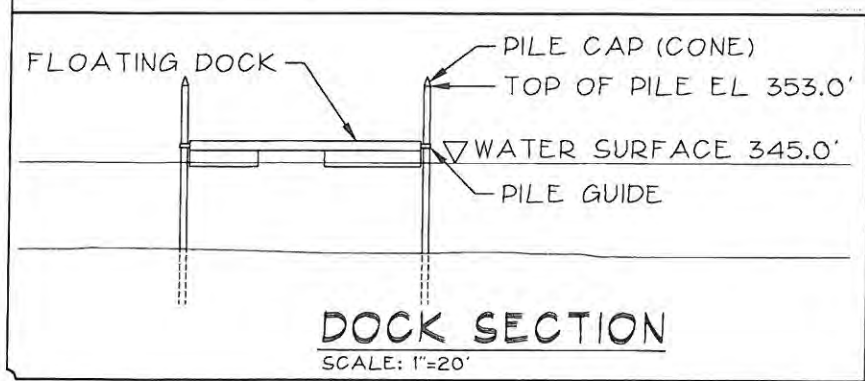
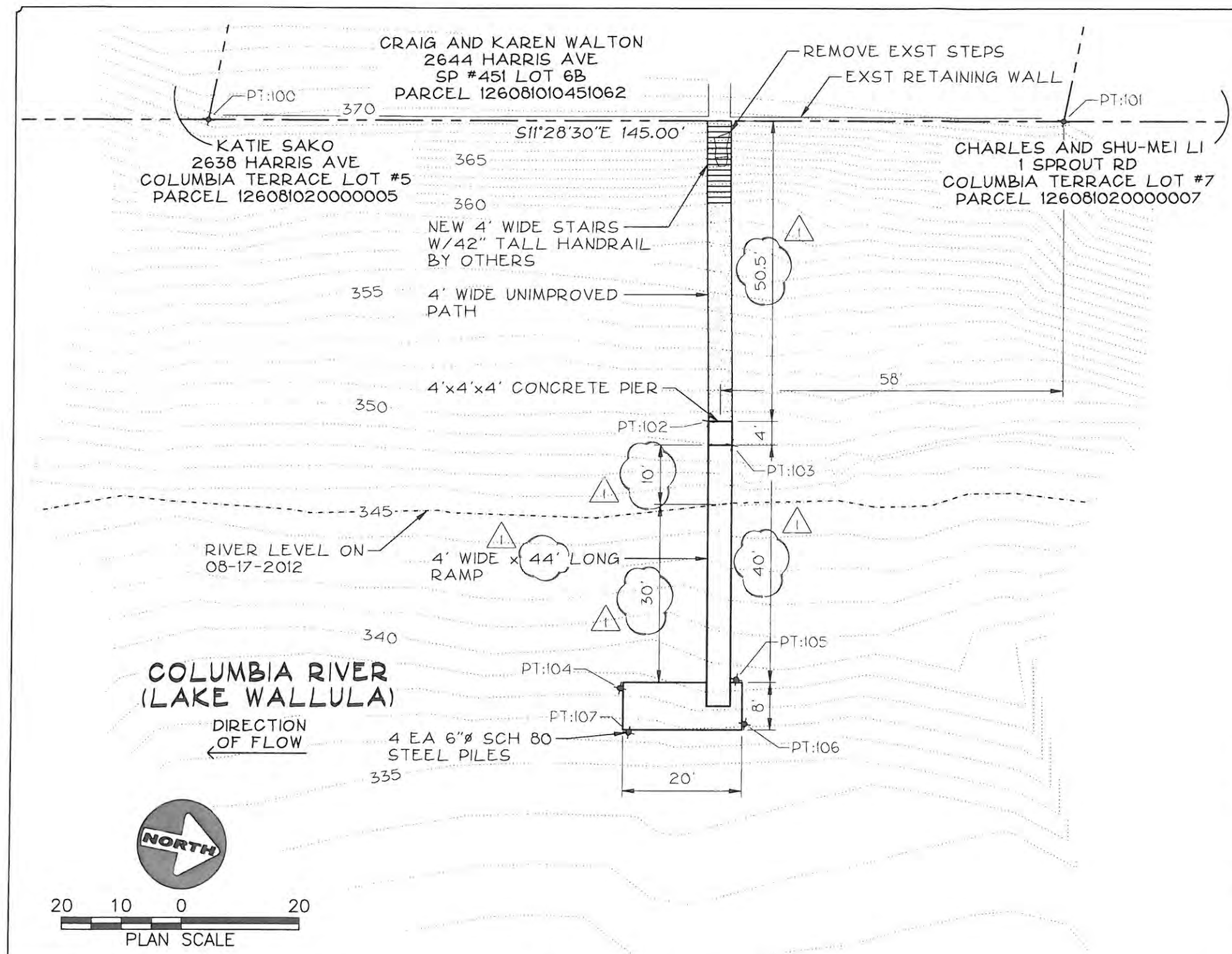
HARMS ENGINEERING, INC
1532 W. SYLVAN, PASCO, WA 99302
Phone (509) 547-2879 Fax (509) 547-3767
Email: info@harmsengineering.com
Web: www.harmsengineering.com
Designed by: C. BARTLEY
Drawn by: M. CLARK
12-11-12 Doc 03 R01
P: 2012-11-12 1:10 PM
Sheet Number 12 of 12

32
YEARS OF
EXPERIENCE
1980-2012

Design
Date
Rev
Name
Description
Project
CRAIG WALTON (509) 521-8139
2044 HARRIS AVE, RICHLAND, WA 99352

WALTON FLOATING DOCK
PROJECT INFORMATION
CRAIG WALTON (509) 521-8139
2044 HARRIS AVE, RICHLAND, WA 99352

08-29-2012
12-102-1B
Sheet Number
2



REFERENCE MATERIALS

1. TOPOGRAPHICAL SURVEY, PROJECT #12-204
 RECEIVED AUGUST 21, 2012
 WORLEY SURVEYING SERVICE, INC, KENNEWICK, WA

DATUM/BENCHMARK

DATUM: CITY OF RICHLAND NGVD 1929
 BENCHMARK: INTERSECTION MONUMENT ELEVATIONS,
 PAGE 50, SI OF HARRIS AVE AND SPROUT RD,
 ELEVATION 377.74'

PROJECT POINTS				
PT #	DESCRIPTION	ELEV	NORTHING	EASTING
100	PROP CORNER	369.31	365295.73	1953325.62
101	PROP CORNER	371.60	365437.83	1953296.78
102	CONC PIER	350.00	365389.08	1953358.25
103	CONC PIER	350.00	365393.80	1953361.37
104	PILE CENTER	353.00	365383.83	1953405.23
105	PILE CENTER	353.00	365402.64	1953399.88
106	PILE CENTER	353.00	365405.60	1953406.94
107	PILE CENTER	353.00	365386.79	1953412.29

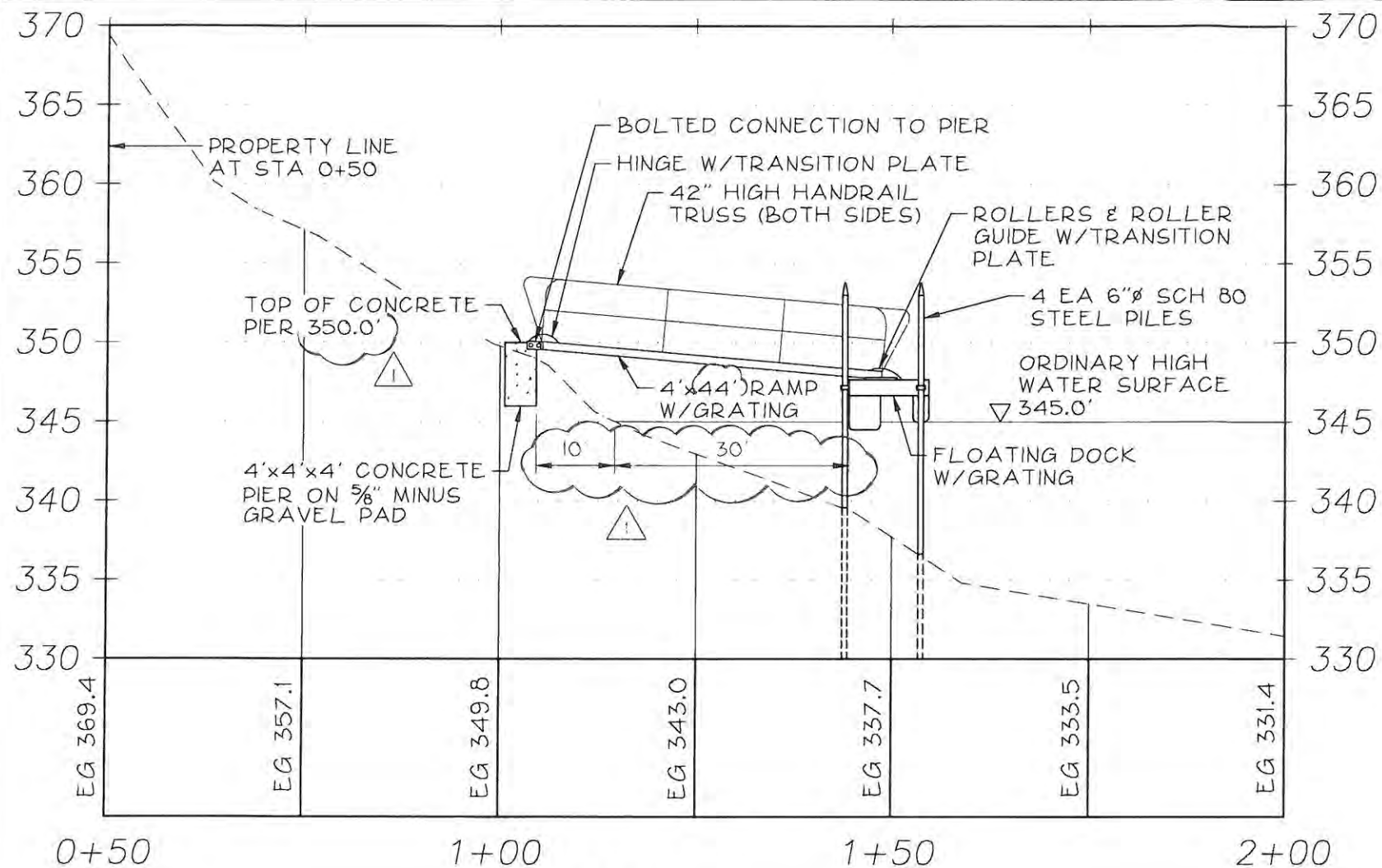
HARMS ENGINEERING, INC
 1632 W Sylvester, Pasco, WA 99352
 Phone (509) 547-2679 Fax (509) 547-3767
 Web Site: www.HarmsEngineering.com
 Email: Info@HarmsEngineering.com

Designed By: C.BATAYOLA
 File Name: 12-102 Dock 03 R01
 Drawn By: M CLARK
 Plotted: September 12, 2012, 9:27:24 AM
 File Path: P:\2012\12-102 1 Walton Dock\Draws\

1980 - 2012
32
 YEARS OF
 EXCELLENCE
 Harms
 Engineering, Inc

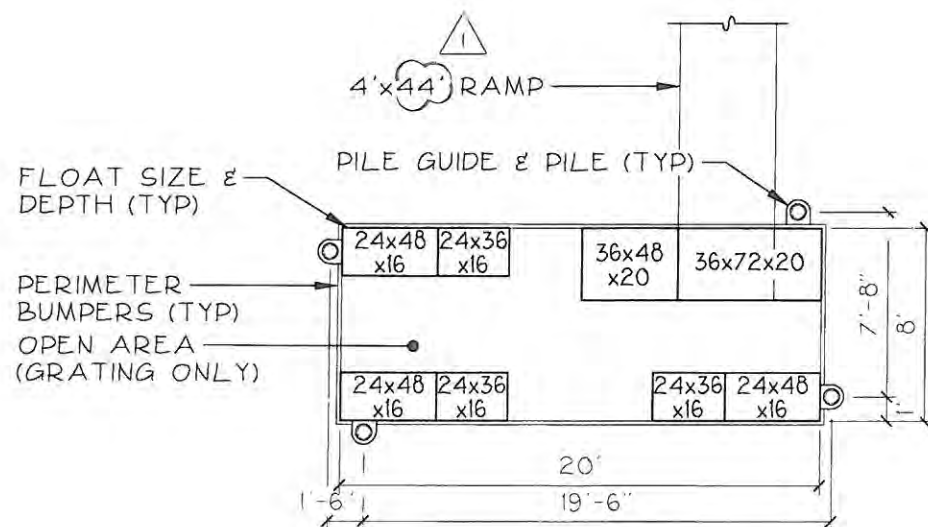
WALTON FLOATING DOCK DOCK SITE PLAN
 2644 HARRIS AVE, RICHLAND, WA
CRAIG AND KAREN WALTON
CRAIG WALTON (509) 521-8139
 2644 HARRIS AVE, RICHLAND, WA 99352
 COPYRIGHT © 2012 HARMS ENGINEERING, INC. ALL RIGHTS RESERVED

Drawing Name
 Date
08-29-2012
 Project Number
12-102.1B
 Sheet Number
1



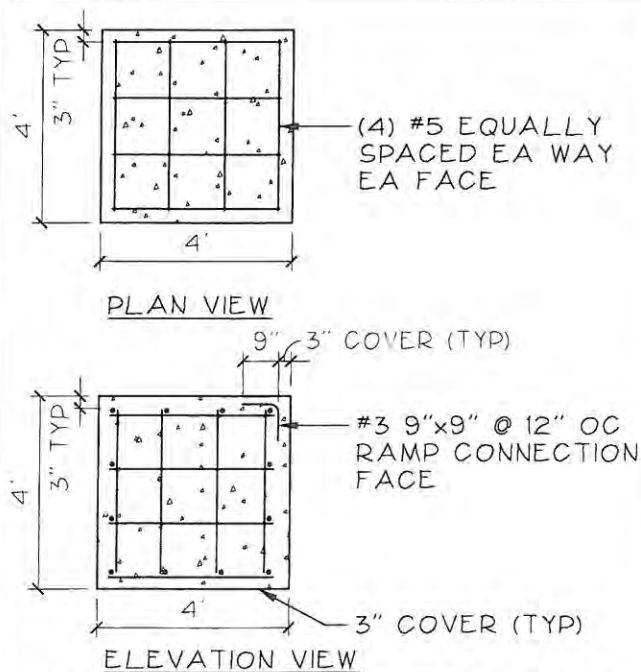
PROFILE

SCALE: 1"=20' (H) 1"=10' (V)



DOCK FLOAT PLAN

SCALE: 1/8"=1'-0"



CONC PIER REINFORCING

SCALE: 1/4"=1'-0"

NOTES

GENERAL:

- DOCK TO MEET ALL REQUIREMENTS OF THE MCNARY SHORELINE MANAGEMENT PLAN, JANUARY 2012, APPENDIX B: DOCK DESIGN CRITERIA.
- DESIGN OF RAMP AND DOCK TO BE BY SUPPLIER.
- UNCURED CONCRETE OR ITS BYPRODUCTS SHALL NOT BE ALLOWED IN CONTACT WITH THE RIVER.
- DOCK TO BE BUILT OF MATERIALS THAT DO NOT LEACH PRESERVATIVES OR OTHER MATERIALS KNOWN TO BE DELETERIOUS TO FISH.
- CONSTRUCTION LIMITED TO THAT ALLOWED BY PERMIT (NOVEMBER 1 THROUGH FEBRUARY 28).
- DOCK CONSTRUCTION TO BE MITIGATED PER MCNARY SHORELINE MANAGEMENT PLAN, JAN 2012, APPENDIX D: MITIGATION.
- ENTIRE SURFACE OF RAMP AND DOCK TO BE COVERED WITH GRATING HAVING AT LEAST 50% OPEN AREA:
 - FIBERGRATE WITH 1"X4"X1" DEEP RECTANGULAR MESH, 69% OPEN AREA, WITH AQUAGRIP TEXTURED SURFACE AS MANUFACTURED BY GRATING PACIFIC.
 - STEEL DEK ECO SERIES, 60% OPEN AREA, PVC ENCAPSULATED STEEL, AS MANUFACTURED BY XCCENT MARINA.
 - OR ENGINEER APPROVED EQUAL.
- DOCK FRAME TO BE GALVANIZED STEEL OR ALUMINUM WITH GRATING SUPPORTS AT A MAXIMUM OF 24" O.C.
- FLOATS TO BE FULLY ENCAPSULATED FOAM, ACE ROTO-MOLD, SCOTTCO DISTRIBUTORS, OR ENGINEER APPROVED EQUAL. MAXIMUM FLOAT AREA TO BE 50% OF DOCK AREA.
- RAMP TO BE 4' WIDE X 44' LONG ALUMINUM TRUSS ARCH WITH 42" HANDRAIL, HINGE ON BANK SIDE, ROLLERS ON DOCK SIDE, AS MANUFACTURED BY WAHOO DOCKS OR ENGINEER APPROVED EQUAL.
- PILES TO BE 6" SCH 80 STEEL. EMBED PILES A MINIMUM OF 15'-6" INTO RIVER BED. INSTALL CONED PILE CAP TO PREVENT BIRDS FROM PERCHING. 8" SCH 40 MAY BE USED IN LIEU OF 6" SCH 80. VIBRATORY PILE DRIVER ONLY - NO IMPACT DRIVING.

DESIGN CRITERIA:

- LIVE LOAD: 10 PEOPLE MAXIMUM / 10 PSF.
- RIVER FLOW: 7 FPS (100-YEAR RETURN), 4.75 FPS (3-YEAR RETURN).
- WIND: 85 MPH, EXP D.

DOCK AREA SUMMARY

DOCK AREA	=	160 SF
FLOAT AREA	=	72 SF
OPEN AREA	=	88 SF
PERCENT OPEN AREA	=	55%



HARMS ENGINEERING, INC
1632 W Sylvester, Pasco, WA 99352
Phone (509) 547-2679 Fax (509) 547-3767
Web Site: www.HarmsEngineering.com
Email: Info@HarmsEngineering.com

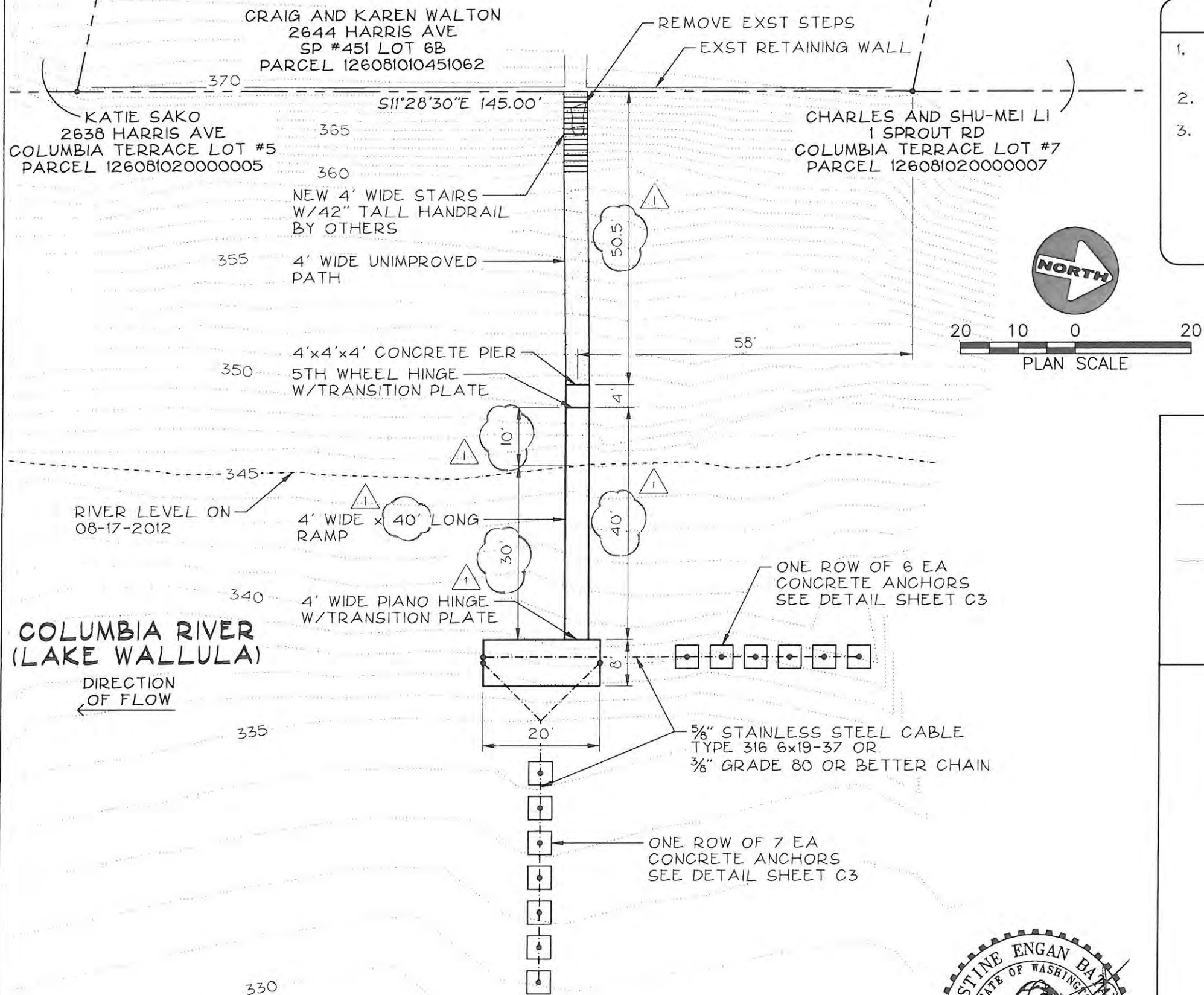
1980 - 2012
32
YEARS OF
EXCELLENCE
Harms
Engineering, Inc

Rev Date Description
9-11-12 ADJUSTED RAMP

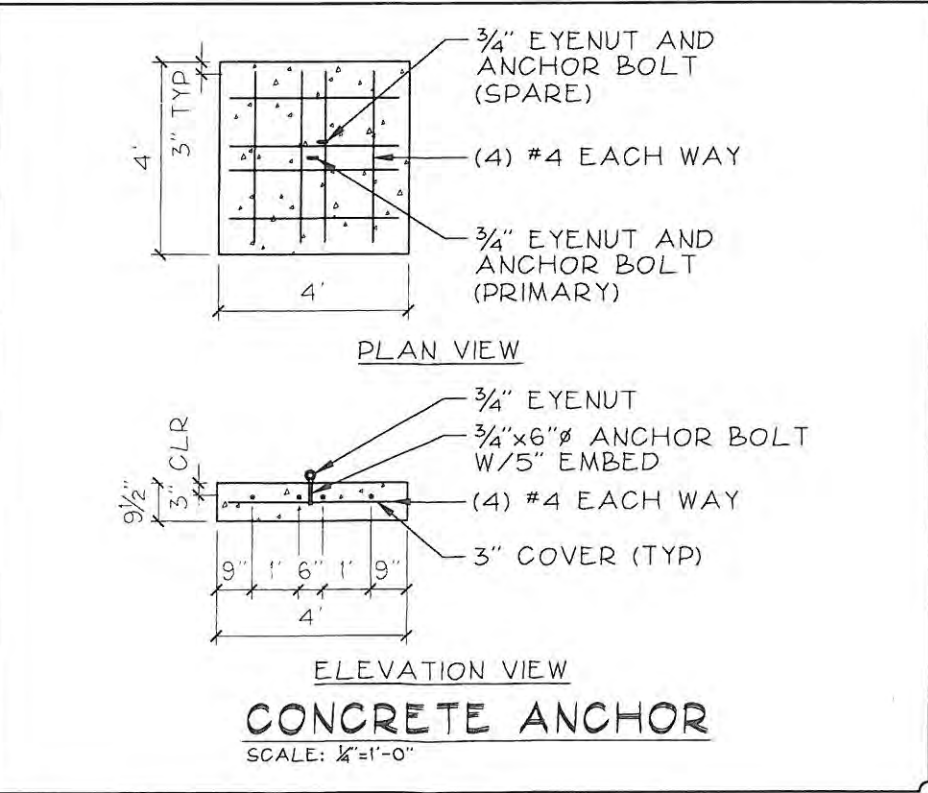
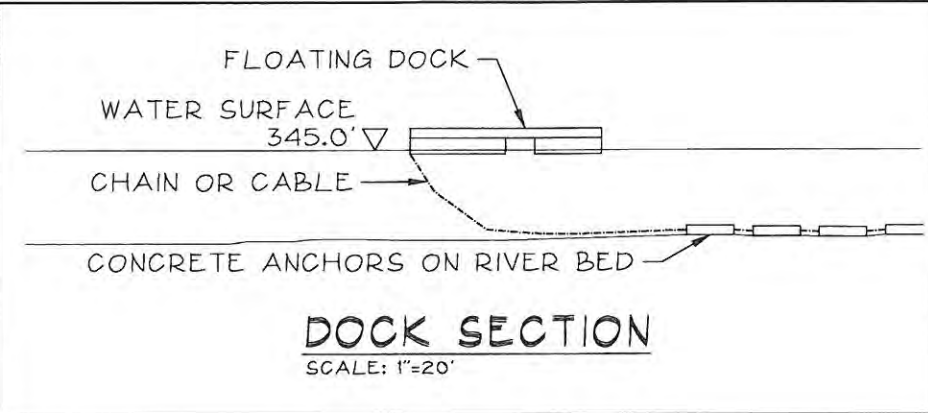
**WALTON FLOATING DOCK
PROFILE AND DETAILS**
2644 HARRIS AVE, RICHLAND, WA
CRAIG AND KAREN WALTON
CRAIG WALTON (509) 521-8139
2644 HARRIS AVE, RICHLAND, WA 99352
COPYRIGHT © 2012 HARMS ENGINEERING, INC. ALL RIGHTS RESERVED

Drawing Name
Date
08-29-2012
Project Number
12-102.1B
Sheet Number
2

Designed By: C. BATAYOLA
File Name: 12-102 Dock 03 R01
Plotted: September 12, 2012, 9:27:27 AM
File Path: P:\2012\12-102.1 Walton Dock\Draws\



- ### NOTES
1. AT OWNER'S OPTION, CONCRETE ANCHORS MAY BE USED IN LIEU OF PILES.
 2. GRATING AND FLOAT SIZES ARE UNCHANGED.
 3. HINGES AND LENGTH OF RAMP ARE MODIFIED AS SHOWN.



ALTERNATE ANCHORING PLAN

SCALE: 1"=20'



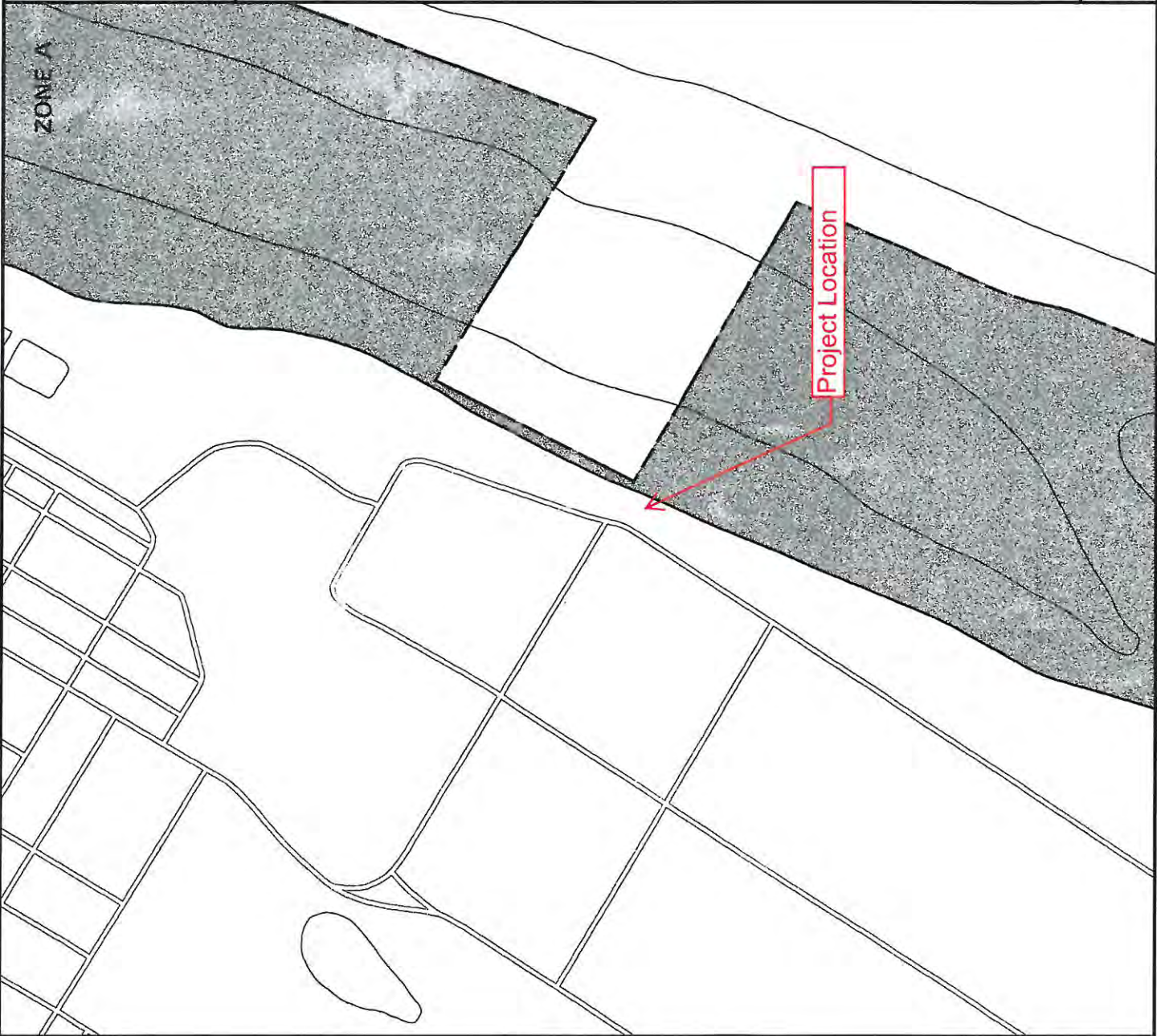
HARMS ENGINEERING, INC.
1632 W Sylvester, Pasco, WA 99352
Phone (509) 547-2679 Fax (509) 547-3767
Web Site: www.HarmsEngineering.com
Email: info@HarmsEngineering.com
Designed By: CBA/YOLA
File Name: 12-102 Dock 03 R01
File Path: P:\2012\12-102-1 Wallon Dock\Draws\

1980 - 2012
32
YEARS OF
EXCELLENCE
Harms
Engineering, Inc.

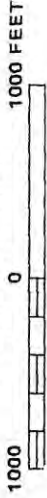
Rev	Date	Description
1	08-29-2012	ADJUSTED RAMP

**WALTON FLOATING DOCK
ALTERNATE ANCHORING PLAN**
2644 HARRIS AVE, RICHLAND, WA
CRAIG AND KAREN WALTON (509) 521-8139
2644 HARRIS AVE, RICHLAND, WA 99352
COPYRIGHT © 2012 HARMS ENGINEERING, INC. ALL RIGHTS RESERVED

Drawing Name	08-29-2012
Project Number	12-102.1B
Sheet Number	3



APPROXIMATE SCALE



NATIONAL FLOOD INSURANCE PROGRAM

FIRM
FLOOD INSURANCE RATE MAP

CITY OF
RICHLAND,
WASHINGTON
BENTON COUNTY

PANEL 10 OF 15
(SEE MAP INDEX FOR PANELS NOT PRINTED)

COMMUNITY-PANEL NUMBER
535533 0010 E

MAP REVISED:
MARCH 1, 1984

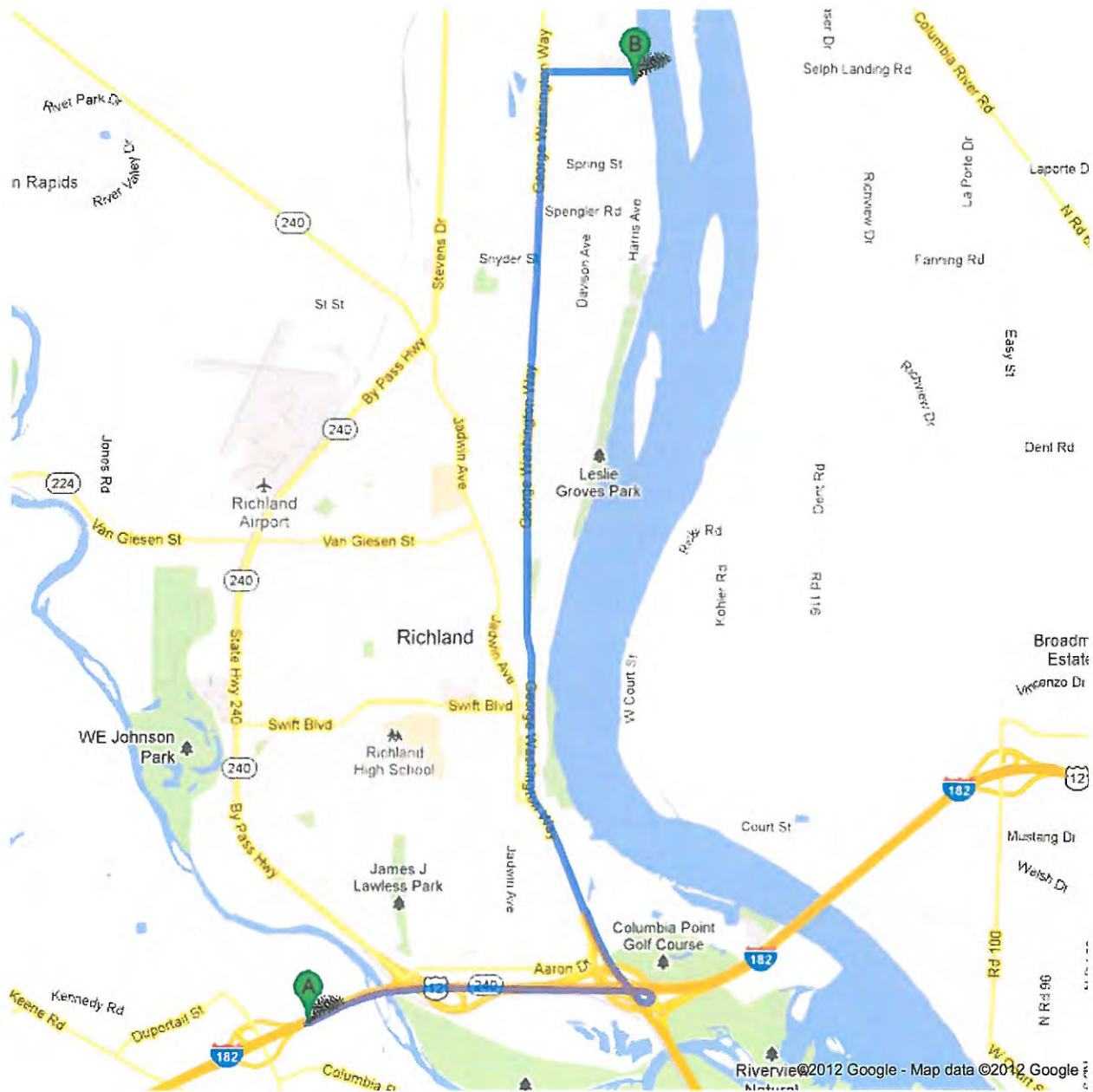


Federal Emergency Management Agency

This is an official copy of a portion of the above referenced flood map. It was extracted using F-MIT On-Line. This map does not reflect changes or amendments which may have been made subsequent to the date on the title block. For the latest product information about National Flood Insurance Program flood maps check the FEMA Flood Map Store at www.msc.fema.gov



Directions to 2644 Harris Ave, Richland, WA
99354
7.6 mi – about 13 mins





I-182 E

1. Head **northeast** on **I-182 E**

About 2 mins

go 1.8 mi

total 1.8 mi

2. Take exit **5B** to merge onto **George Washington Way**

About 9 mins

go 5.2 mi

total 7.1 mi

3. Turn right onto **Sprout Rd**

About 1 min

go 0.5 mi

total 7.5 mi

4. Take the 2nd right onto **Harris Ave**

Destination will be on the left

go 279 ft

total 7.6 mi



2644 Harris Ave, Richland, WA 99354

These directions are for planning purposes only. You may find that construction projects, traffic, weather, or other events may cause conditions to differ from the map results, and you should plan your route accordingly. You must obey all signs or notices regarding your route.

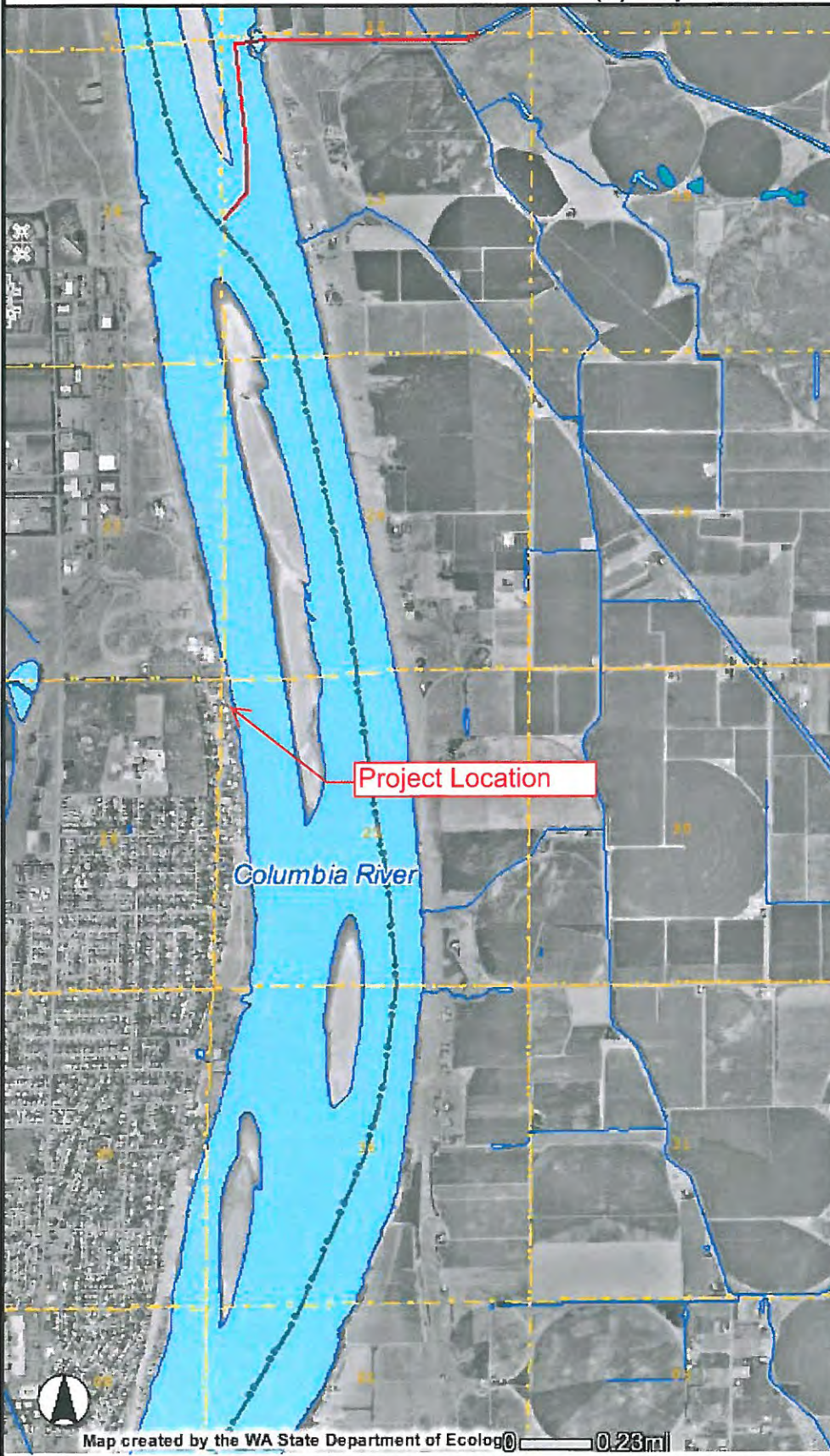
Map data ©2012 Google

Directions weren't right? Please find your route on maps.google.com and click "Report a problem" at the bottom left.

Section 303(d) Map



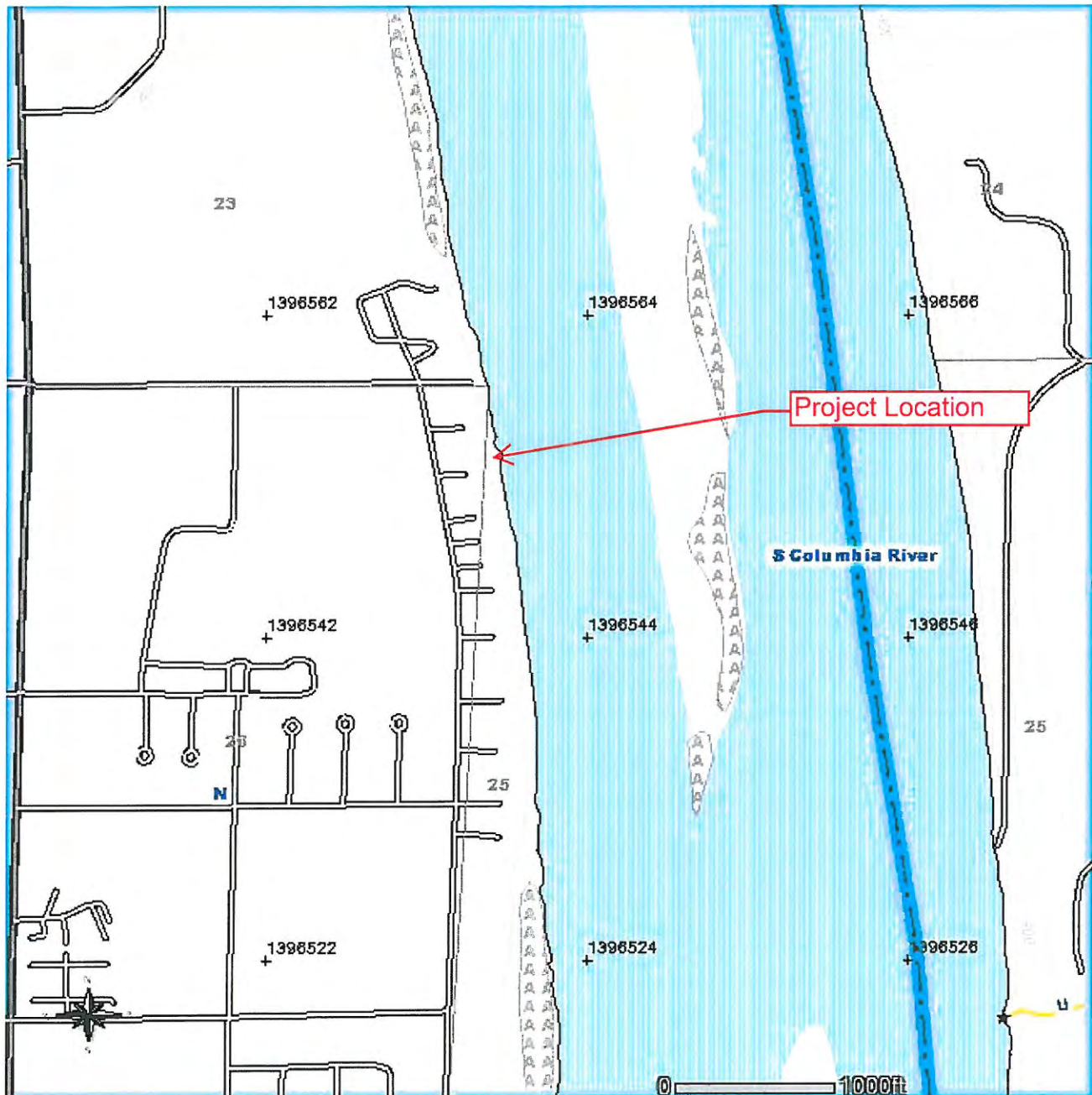
- Legend**
- Category 5 Sediments
 - Category 5 Waters
 - Category 5 Waters
 - Category 5 Waters
 - Superfund Sites
 - Highways**
 - State Highway
 - US Highway
 - Interstate
 - Sub-Watersheds**
 - WRIA**
 - County**
 - Township/Range/Section**
 - Estuary Names**
 - Water Bodies**
 - Reservoir
 - Glacier
 - Marsh
 - Dam
 - Rock
 - Pier/Jetty
 - Impoundment
 - Island
 - Water
 - Streams



FOREST PRACTICE WATER TYPE MAP

TOWNSHIP 10 NORTH HALF 0, RANGE 28 EAST (W.M.) HALF 0, SECTION 25

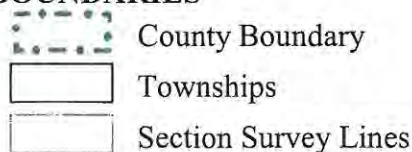
Application #: _____



Wednesday, September 12, 2012 1:53:44 PM
NAD 83
Contour Interval: 40 Feet

FPARS MAPS LEGEND

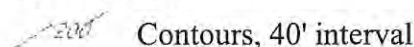
BOUNDARIES



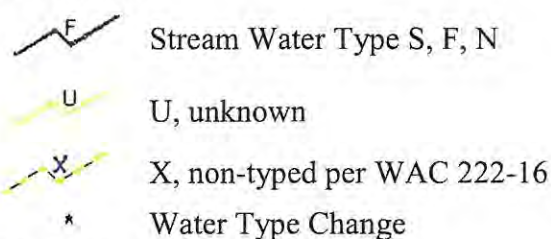
WATER BODIES



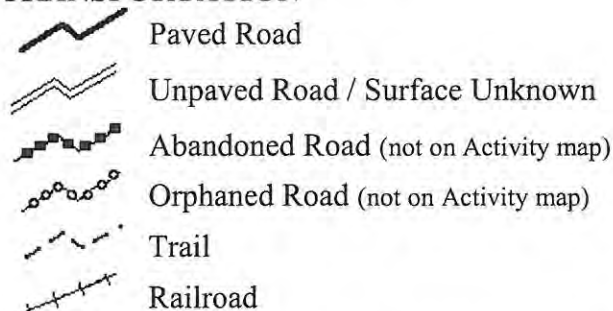
ELEVATION



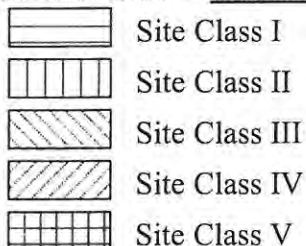
STREAMS



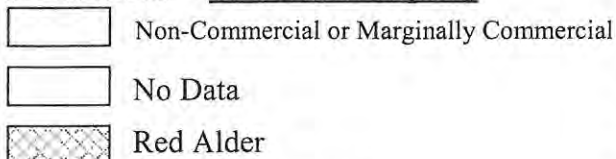
TRANSPORTATION



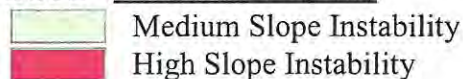
SITE CLASS – On Site Class Map only



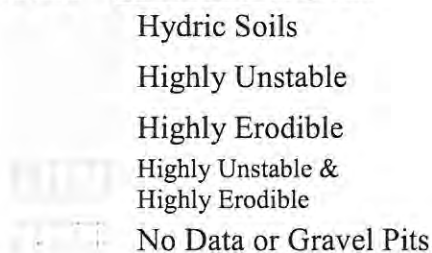
SITE INDEX – On Site Class Map only



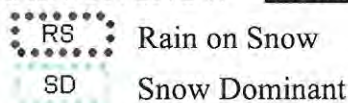
SLOPE– On Resource Map only



SOILS – On Resource Map only



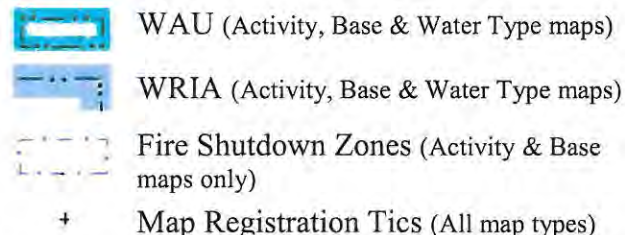
RAIN ON SNOW – On Resource Map only



WETLANDS – Resource & Water Type Maps only



OTHER



Notes to Applicant or other user:

See the FPA/N instructions for Activity Map standards.

Site indices are based on the WA-DNR State Soil Survey. If the site index does not exist or indicates red alder, noncommercial, or marginally commercial species, the following apply:

- If red alder is indicated and the whole RMZ width is within that site index, then use site class V. If red alder is indicated for only a portion of the RMZ width, or there is on-site evidence that the site has historically supported conifer, then use the site class for conifer in the most physiographically similar adjacent soil polygon.
 - In Western Washington, if there is no site index information, use the site class for conifer in the most physiographically similar adjacent soil polygon.
 - In Eastern Washington, if there is no site index information, assume site class III, unless site specific information indicates otherwise.
 - If the soil polygon indicates noncommercial or marginally commercial, then use site class V.
- See Forest Practices Rules WAC 222-16-010 for a more complete definition of site class.

Disclaimer: Features shown on Forest Practices Application Review System (FPARS) maps represent data stored in the Washington State Department of Natural Resources (DNR) Geographic Information Systems database. As some of the data sets rely on outside sources of information, the DNR cannot accept responsibility for errors or omissions, and therefore there are no warranties that accompany this material.

City of Richland

Geological Hazards and Flood Plains

FIGURE LU - 2

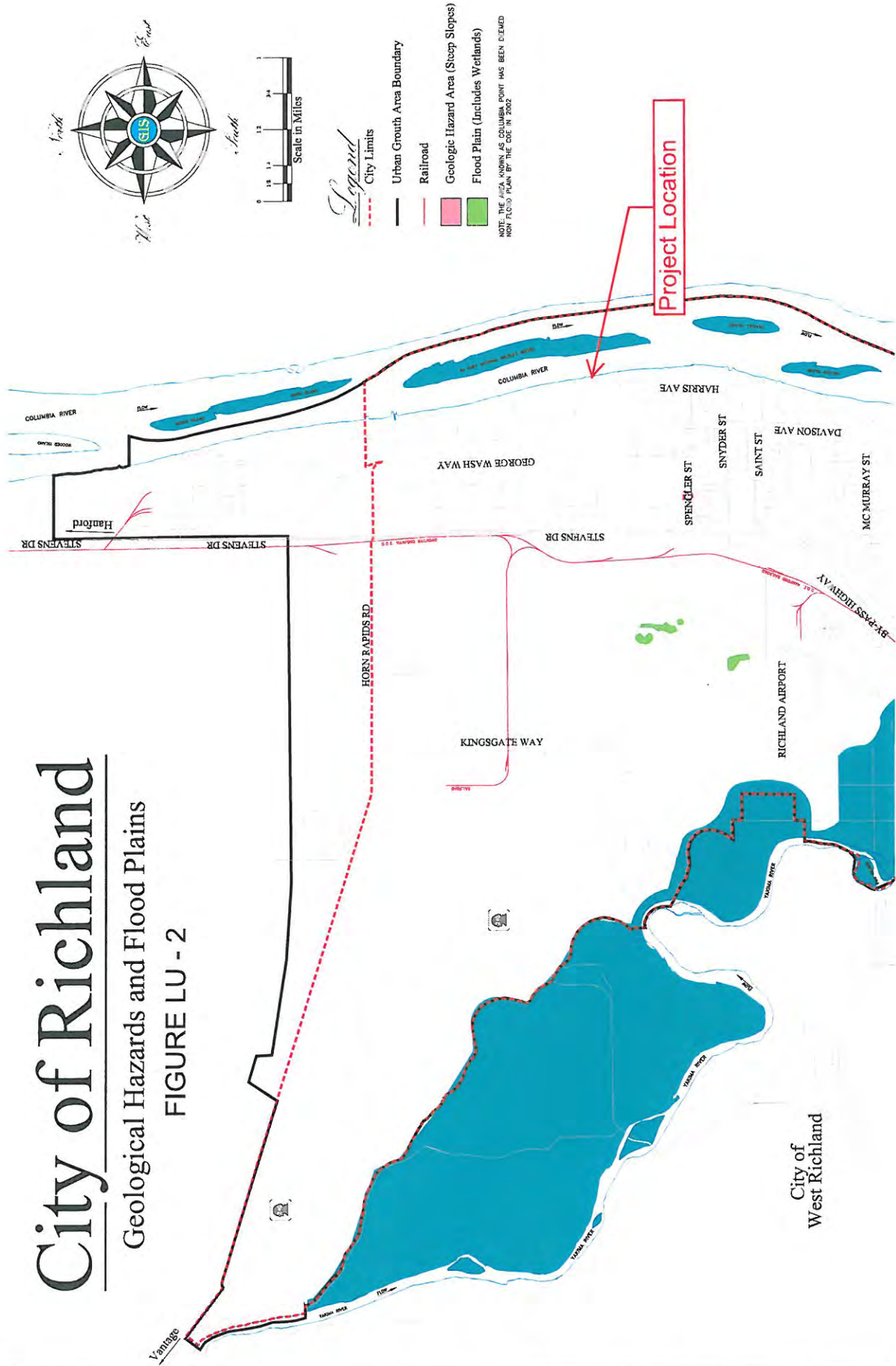




Photo 1 - Looking east from east side of property at waterfront.



Photo 2 - Looking south from east side of property along waterfront.



Photo 3 - Looking northeast from top of bluff at neighboring property and existing dock.



Photo 4 - Looking southeast from top of bluff at neighboring property and existing docks.

List provided by Eric Bartrand, Dept. of Fish and Wildlife, June 28, 2012

Washington State Sensitive:

PHS Features Found					
Common Name	Scientific Name	Priority Area	Display Resolution	Feature Type	Full Record
Waterfowl Concentrations (show)	Null	Regular Concentration	AS MAPPED	Area	Show Full Record
Grebe Species (show)	Null	Breeding Area	AS MAPPED	Area	Show Full Record
Common Name	Scientific Name	Priority Area	Display Resolution	Feature Type	Full Record

Common Loon

American White Pelican

Federal ESA:

Bull Trout

Upper Columbia Spring Chinook

Upper Columbia Steelhead

II. Status of Species and Critical Habitat

A. Species Lists from the Services

NOAA Fisheries and USFWS Species Lists are included at the end of this BA. A comprehensive list of the ESA listed species follows, summarizing the lists from Franklin, Benton and Walla Walla Counties, Washington, and Umatilla County, Oregon.

Endangered

- Upper Columbia River spring Chinook salmon (*Oncorhynchus tshawytscha*)
- Snake River sockeye salmon (*O. nerka*)
- Pygmy rabbit (*Brachylagus idahoensis*) Columbia Basin distinct population segment
- Upper Columbia River steelhead (*O. mykiss*)

Threatened

- Middle Columbia River steelhead (*O. mykiss*)
- Snake River steelhead (*O. mykiss*)
- Snake River fall Chinook salmon (*O. tshawytscha*)
- Snake River spring/summer Chinook salmon (*O. tshawytscha*)
- Bull trout (*Salvelinus confluentus*) Columbia River distinct population segment
- Ute ladies'-tresses (*Spiranthes diluvialis*)
- Canada lynx (*Lynx canadensis*)

Candidate

- Columbia spotted frog (*Rana luteiventris*)
- Greater sage grouse (*Centrocercus urophasianus*) Columbia Basin Distinct Population Segment
- Yellow-billed cuckoo (*Coccyzus americanus*)
- Umtanum desert buckwheat (*Eriogonum codium*), plant
- Washington ground squirrel (*Urocitellus [=Spermophilus] washingtoni*)
- White Bluffs bladderpod (*Physaria tuplashensis*), plant

B. Endangered Species

i. Upper Columbia River Spring Chinook Salmon

Several different strains of Chinook salmon can be found in Lake Wallula during part of the year. Unlisted upper Columbia River (UCR) fall Chinook salmon are the most common. However, UCR spring Chinook, Snake River (SR) spring/summer Chinook salmon, and SR fall Chinook salmon are also present. Migration timing and life stage development can be different between the strains as they migrate through and use the lake.

FINDING OF NO SIGNIFICANT IMPACT

for the Shoreline Management Plan Update for

Lake Wallula, Oregon and Washington

The U.S. Army Corps of Engineers, Walla Walla District (Corps), has prepared a Revised Programmatic Environmental Assessment (EA) to evaluate proposed changes to the 1983 *McNary Lakeshore Management Plan, Lake Wallula, Oregon and Washington*, which is attached hereto and incorporated herein by reference.

I. Proposed Action

The Corps is proposing to update the 1983 Lakeshore Management Plan (1983 LMP) (the updated plan will hereinafter be referred to as the Shoreline Management Plan or SMP) in accordance with 36 C.F.R. Part 327.30 and Engineer Regulation (ER) 1130-2-406, *Project Operation – Shoreline Management at Civil Works Projects*. The proposed action is formal review of the 1983 LMP and subsequent implementation of the SMP.

II. Purpose and Need

The purpose of the proposed action is to identify a management strategy the Corps will use to manage the shoreline in a manner that will promote the safe and healthful use of these shorelines by the public while maintaining environmental safeguards to ensure a quality resource for use by the public. The Corps' main objective is to achieve a balance between permitted private uses, compliance with the current shoreline management regulations and resource protection specifically supporting threatened and endangered fish species. The secondary objective is to reasonably limit impacts to current permit holders, if at all possible.

The need for the proposed action is to meet the regulatory requirements established by 36 C.F.R. 327.30 and the Chief of Engineers (ER 1130-2-406), which require that an SMP be prepared for each Corps water resource development project where private shoreline use is allowed, and that the SMP be reviewed every five years and revised as necessary. The original Lakeshore Management Plan was prepared in 1980, and the last revision was completed in 1983. Since that time, several changes have taken place, such as the listing of several fish species and critical habitat under the Endangered Species Act (ESA) and increased development along the shoreline. The updated SMP seeks to balance increasing demands for private shoreline use with the changing resource requirements.

III. Alternatives Considered

The Corps identified three alternatives: Alternative 1 - the No Action Alternative, Alternative 2 - the Best Balanced Alternative between Private Use and Environmental Considerations (preferred), and Alternative 3 – Maximum Environmental Benefits.

The No Action Alternative is prescribed by the Council of Environmental Quality (CEQ) Regulations to serve as the baseline against which all other alternatives are analyzed. In this case, the No Action Alternative is actually the no change alternative, as private use of the shoreline would continue as described in the 1983 LMP for Lake Wallula.

Implementation of Alternative 2 would achieve the best balance between private use and environmental considerations and is the alternative the Corps has selected as preferred. Implementation of this alternative would provide opportunities for private use of Corps-managed Federal lands and McNary Project waters (Lake Wallula), while maintaining compliance with environmental laws. The 1983 LMP would be updated and the shoreline would be re-allocated by reducing the Limited Development Areas (LDAs), wherein private use is authorized. The Corps would continue to issue new permits for boat docks, however new docks must be constructed to meet SMP dock criteria. Existing docks would be allowed to remain per the conditions of the 2011 dock inspection if the dock is in a safe condition and has not been extensively modified without authorization. Upon sale or transfer of the adjacent property, existing docks must be upgraded to meet SMP dock criteria. When replacing major dock components (e.g. floats, decking) dock owners will replace with SMP dock criteria-compliant components. Those upgrading or installing new docks (such as new homeowners) will have four (4) full in-water work windows (November 1 through February 28) after the issuance of their permit to accomplish construction. Permits for special status docks (those that existed prior to November 17, 1986) will be renewed, but will require upgrading when the adjacent property is sold/transferred. When replacing major dock components (e.g. floats, decking, walkways) owners of special status docks will replace with SMP dock criteria components. The Corps would issue new permits and renewals for vegetation modification, but would require mitigation (restoration of riparian habitat to offset any negative environmental impacts). Activities characterized as other shoreline uses would only be permitted after the applicant received a real estate license for the activity on Corps land and mitigation would be required.

Alternative 3 – Maximum Environmental Benefits – would provide maximum benefits to key environmental resources, specifically threatened and endangered species and their critical habitat. The Corps would revise the 1983 LMP to reallocate the shoreline to further reduce the LDAs. No new permits would be issued for boat docks, however permits would be renewed for existing docks once the dock was upgraded to meet the SMP dock criteria. No new permits would be issued for vegetation modification, however existing permits would be

renewed but only after mitigation requirements were implemented. Activities characterized as other shoreline uses would only be permitted after the applicant received a real estate license for the activity on Corps land and mitigation would be required.

IV. Factors Considered in Determining that No Environmental Impact Statement is Required

The EA examines the potential effects of the three alternatives on resource areas and areas of environmental and socioeconomic concern: water quality, soils, vegetation, aquatic resources, wildlife, threatened and endangered species, cultural resources, recreation, socioeconomics, and cumulative impacts.

Implementing the No Action Alternative would be expected to result in a combination of short- and long-term adverse and beneficial effects. Implementing the No Action Alternative would be expected to result in minor adverse effects on water quality, soils, vegetation and wildlife. Moderate adverse effects could be expected for aquatic resources, threatened and endangered species, and cultural resources due to the fact that an unlimited number of docks could be constructed. Minor to moderate beneficial effects to recreation and socioeconomics would result from implementation of this alternative.

Implementing the Preferred Alternative – Alternative 2 – Best Balanced Alternative between Private Use and Environmental Considerations – would be expected to result in a combination of short- and long-term minor adverse and beneficial effects. Implementing this alternative would be expected to result in short-term minor adverse effects on water quality, soils, vegetation, some aquatic resources, wildlife and threatened and endangered species, mostly due to disturbances associated with construction activities. There would be long-term beneficial effects to aquatic resources, threatened and endangered species and cultural resources associated with compliance with environmental laws and the mitigation requirements. Negative effects to recreation would be minor as new permits and renewals would still be allowed, albeit with less docks in a reduced LDA. There would be both adverse and beneficial negligible effects on the socioeconomics of the vicinity. Because the proposed action affects such a small portion of the overall Tri-Cities population, any potential negative socioeconomic impacts would be non-controversial and insignificant to the majority.

Implementation of Alternative 3 – Maximum Environmental Benefits – would be expected to result in a combination of short- and long-term minor adverse and beneficial effects. Implementing this alternative would result in minor short-term adverse effects to water quality, soils, vegetation, some aquatic resources, wildlife, and threatened and endangered species, again, mostly due to disturbances associated with construction activities. There would be long-term

beneficial effects to aquatic resources, threatened and endangered species, and cultural resources as private use and construction along the shoreline would be reduced. There would be minor adverse effects on recreation and socioeconomics in the vicinity.

V. Mitigation Requirements

Potential adverse effects to various environmental resources associated with the proposed action of updating the SMP will be minimized or avoided by the mitigation measures required in the SMP, as outlined below and in Appendix H of the EA:

- New dock permits will require: 1) the dock must be constructed to meet the SMP dock criteria; and 2) the restoration of riparian habitat at a ratio of 5 to 1 based on the square footage of the dock.
- Existing docks must be upgraded upon sale or transfer of the adjacent property to meet the SMP dock criteria with four (4) in-water work windows allowed to accomplish the upgrade.
- Vegetation modification permits will require restoration of riparian habitat at a ratio of 2 to 1 based on the square footage of disturbed ground.
- Activities or facilities classified as "Other Shoreline Uses" will require mitigation and will be addressed on a case-by-case basis.

Mitigation requirements will be a condition of the Shoreline Management Permit and, if applicable, the upland support structure real estate license.

The Corps will conduct onsite monitoring to ensure full compliance with mitigation requirements.

VI. Public Review

In May 2011, the Corps released the updated SMP and Revised Programmatic Environmental Assessment for public review and comment and a public meeting was held in Pasco on June 9, 2011. During the 90-day review period from May 27 to August 27, 2011 approximately 66 comments were received. In response to those comments and after extensive review, the Corps modified the SMP and accompanying EA. The revised EA and Draft Finding of No Significant Impact (FONSI), as well as the updated Draft SMP, were formally released for a 30-day public review and comment period on October 27, 2011. The Corps also held a public meeting on November 9, 2011, in Pasco, in which interested parties were given the opportunity to comment on the revised documents. As a result of those comments, the Corps modified the shoreline allocations slightly and created a 2,018 foot limited development area on the Snake River in the Burbank Heights area.

VII. Conclusion/Finding

Having reviewed the Environmental Assessment and associated appendices, I find that the documents provide sufficient discussions on the purpose of and need for the proposed action, alternatives, the environmental impacts of the proposed action and the alternatives, and a listing of agencies and persons consulted. Therefore, I believe these documents provide sufficient evidence and analysis to meet the Corps' requirements pursuant to the National Environmental Policy Act and for the Corps to make a finding of no significant impact to the quality of the human environment. I have taken into consideration the technical aspects of the project, best scientific information available, and public comments received. Based on this information, I find that implementation of the preferred alternative would not result in significant impacts on the quality of the human environment. Therefore, an environmental impact statement is not required.



David A. Caldwell
Lieutenant Colonel, Corps of Engineers
District Commander

14 December 2011

Date

TO: Parks and Recreation Commission

FROM: Phil Pinard, Parks and Recreation Manager

DATE: November 8, 2012

SUBJECT: Allocation of Park District 3 Funds to Howard Amon Park Tennis Court project

STAFF RECOMMENDATION

That the Parks and Recreation Commission recommend Council authorize expenditure of up to \$35,000 of Park District 3 Funds to the Howard Amon Park Tennis Court project.

MOTION FOR CONSIDERATION

I move that the Parks and Recreation Commission recommend Council authorize expenditure of \$35,000 of Park District 3 funds to the Howard Amon Park Tennis Court project.

FISCAL IMPACT

This request will leave \$38,000 in Park District 3. This district accumulates very little in annual revenue from Park Impact Fees as little construction occurs in this district. The existing funds in the district came from the new apartments on Duportail Street.

BACKGROUND

The 2012 Capital Improvement Program (CIP) allocates \$475,000 for the reconstruction of the Howard Amon Park tennis courts and Amon Park Drive. The project includes a total demolition of the existing courts, rebuilding the courts and the adjacent section of Amon Park Drive (including a 4' x 8' storm water percolation trench), new court lighting, fencing and court surfacing.

The Public Works Storm Water Division participated in the project in the amount of \$25,000 bring the total project budget to \$500,000. On August 21, 2012 five bids were opened with the low bid being \$396,126.75 from POW, Inc. of Pasco Washington.

Several Change Orders have been issued for the project due to unforeseen circumstances which has resulted in budget overruns of \$19,000. The request for \$35,000 will provide a contingency for any other unanticipated costs. Any unused portion of the \$35,000 will be returned to Park District #3

TO: Parks and Recreation Commission

FROM: Phil Pinard, Parks and Recreation Manager

DATE: November 8, 2012

SUBJECT: Acquisition of Two Parcels Associated with Badger Mountain

STAFF RECOMMENDATION

That the Parks and Recreation Commission recommend acquisition of two parcels of property as identified in Attachment 1(4.5 acres) & 2 (16 acres).

MOTION FOR CONSIDERATION

I move that the Parks and Recreation Commission recommend Council acquire the two parcels as identified in Attachment 1 and 2.

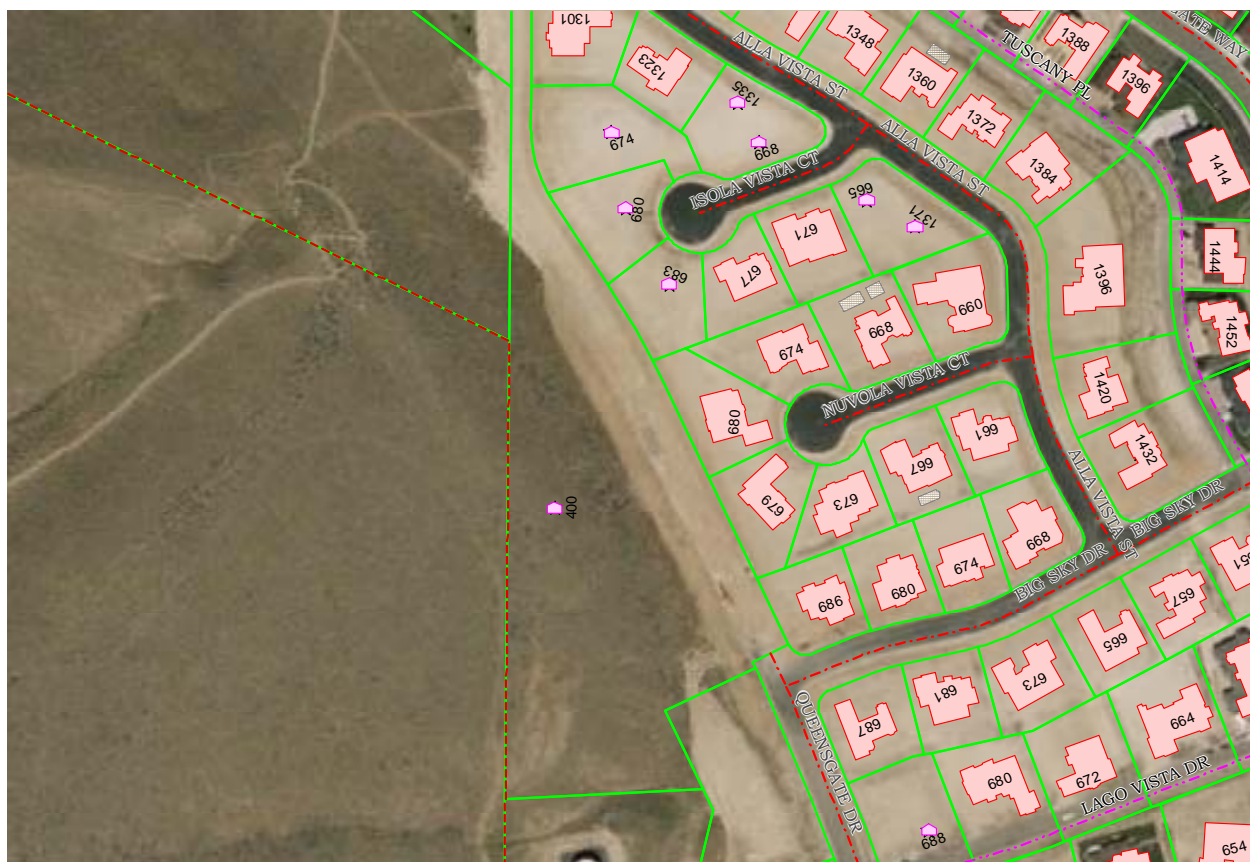
FISCAL IMPACT

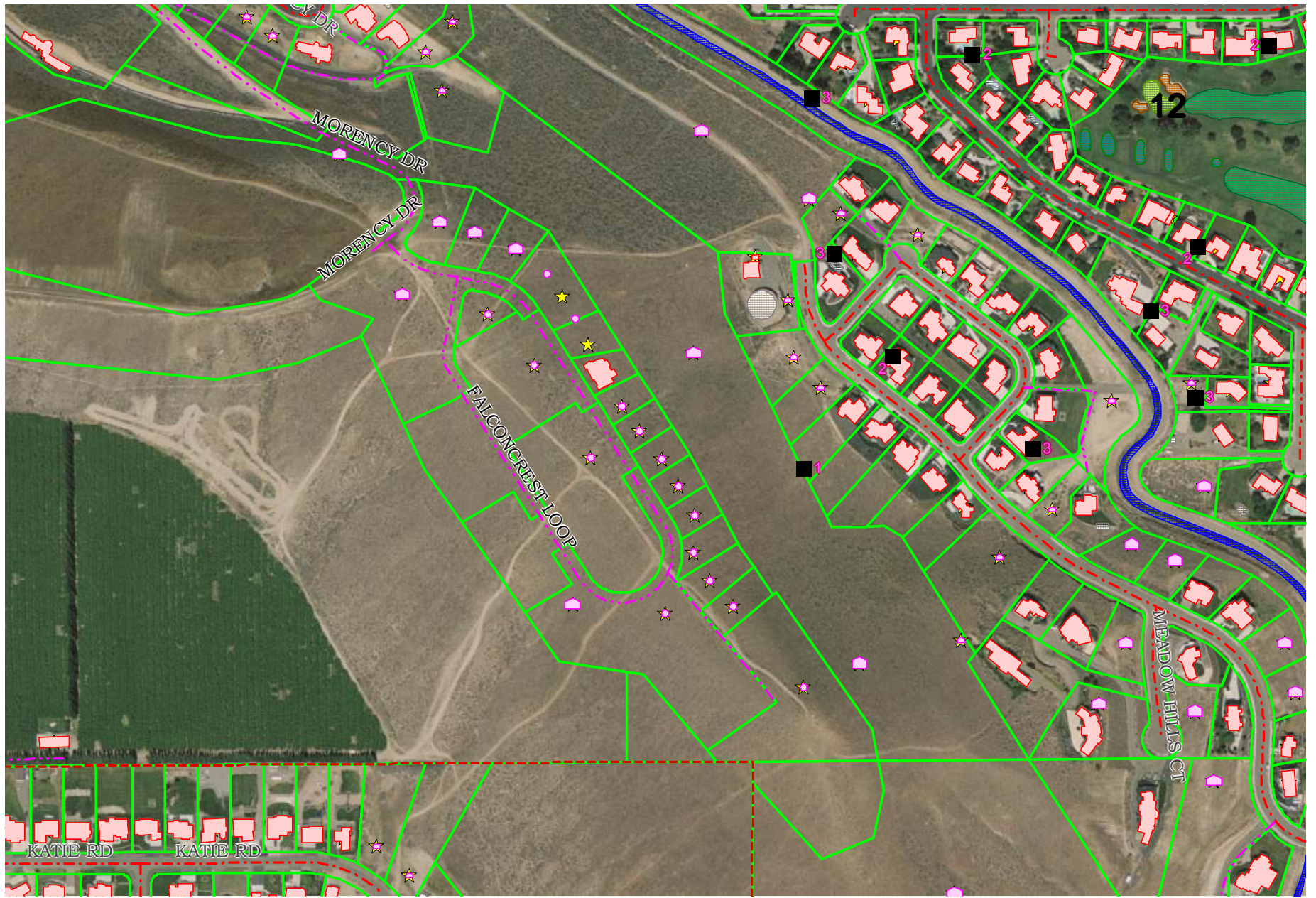
More information will be presented to the Commission at the November 8 meeting regarding financial impacts associated with the acquisition of these properties. The parcel identified in Attachment 1 may have a cost associated with it. The parcel identified in Attachment 2 at this time is a donation.

BACKGROUND

Acquisition of the property identified in Attachment 1 will provide a benefit to the Badger Mountain Centennial Preserve users by providing a trail option to by-pass the stair section of the Canyon Trail and will provide a connection for the Skyline bike trail so that bicycle access is available at the east end of the preserve. Acquisition of the property will also prohibit development immediately adjacent to the preserve.

The property identified in Attachment 2 is contiguous to an existing 16 acre natural open space park and will provide additional open space as well as an option for a trail connection to a public street (Meadow Hill Drive) from Little Badger Mountain. This trail section and the trail in the Falconcrest subdivision will provide a section of the proposed Rivers to Ridges Trail.





Parks and Recreation Department November 2012

Planning and Construction Division

Howard Amon Park Tennis Courts

Work began on September 17th. The contract was awarded to POW Contracting of Pasco Washington, in the amount of \$396,126.75. The tennis courts were paved on October 9th and construction has begun on Amon Park Drive. Work is expected to be complete by mid-December.



Columbia Point Marina Boat Pump-out Grant

The City has received a \$65,000 grant from the Washington State Parks and Recreation Commission to remove the existing boat pump-out equipment and install a new pump-out facility on the T dock section in the marina.

Newton Street

In March of 2012 Sharefest and Rotary volunteers completed the first phase of the Newton Street landscaping project which provides a signature gateway route linking Richland's downtown to the river shore. In October, City Parks, Facilities and Street crews and The Rock Placing Company completed much of the second phase of the project. The remaining work, placing rock ground cover, will be completed by volunteers.



ORV Park, RV Campground Improvements

Vincent Brothers, LLP of Pasco, Washington has completed work on 70 RV camp sites at the ORV Park. Each site is equipped with water and electrical service. Funding for the improvements was provided by a Recreation and Conservation Office (RCO) Non-Highway and Off-Road Vehicle Activities Program (NOVA) grant.



Service Projects

- Amazon.com and Twin Rivers Community Facilities spread rock in one of the landscaping beds at Badger Mountain Park.



- Christian Burrup spread rock in a landscape island at Badger Mountain Park parking lot for his Eagle Scout project.



- Brandon Solarzano, Eagle Scout, placed landscaping rock along the Keene Road Trail as part of his Scout project.



Recreation Division

Instructors Meeting

Instructors took turns shooting for a Skinny Cow ice cream sandwich at the twice annual Instructor meeting. The meeting was held Wednesday, October 3rd at the Richland Community Center. The basketball theme was chosen, as the season is quickly approaching. The purpose of this important meeting is to share information, collect ideas and ensure that communication remains clear and open between instructors/activity leads and Richland Community Center staff.



Dive Meet at George Prout

On October 4th George Prout Pool hosted a dive meet that included five area high school teams. In a dive meet participants are allowed 11 dives each in an effort to accumulate the best score. In this meet three area divers qualified for the state competition to be held at the end of the season.

Geocaching 101

On Wednesday, October 3rd Park Ranger Jen taught a Geocaching 101 class at the Richland Community Center. The participants learned about geocaching, swag, geocoins/trackables, the basics of placing a geocache and how a GPS unit works. They also had an opportunity to find geocaches throughout Howard Amon Park.



Green Recognition Award Gala

The annual Green Business Awards event was held in the Richland Community Center Riverview Room on Thursday, October 4th. The event was hosted by the Public Information Division with support from Parks and Recreation Staff.



RCO Grant Presentation

Recreation Coordinator Stan Johnson presented a Non-Highway and Off-Road Vehicle Activity Program (NOVA) Maintenance and Operations grant proposal to the Recreation and Conservation Office Board on Tuesday October 2nd in Olympia. If the \$100,000 grant is awarded, it will be used to purchase a used backhoe for use at Horn Rapids ORV Park. It will be used for repairs, preventative maintenance and capital projects. Stan was accompanied by Horn Rapids Motosports President Ray Coffman who was in attendance to assist with questions from the board.



Fastpitch State Tournament Awarded

The Washington State Amateur Softball Association (WASA) 14U A&B Girls Fastpitch State Tournament was awarded to Richland and Pasco at the State Meeting held on Saturday, October 6th in Yakima. The 14U State Tournament was the largest WASA State Tournament with 52 teams participating in the 2012 tournament that was held in Yakima. The tournament will be played at Columbia Playfield in Richland and the TRAC complex in Pasco on July 5-7th, 2013. Richland Parks and Recreation Coordinator Stan Johnson, along with Pasco Recreation Specialist Tony Johnson presented the winning bid to the WASA Board.



Computer Lab at the Richland Community Center

The Computer Lab at the Richland Community Center is a great place for citizens to access the internet. The Richland Community Center provides this no charge activity to the public using volunteers to monitor the lab for selected hours during the week.



Afternoon Pool Players

"Monday through Friday, this is our main source of entertainment and we really enjoy it," declared the smiling pool player who meets with his buddies each afternoon at 1:00pm. The participants range from 97 years down to the youngsters in their 60s.



Rivers of Ink



The 4th Annual Rivers of Ink – Readers and Writers Connect Conference was held on Friday and Saturday, October 12th and 13th at the Richland Library and the Richland Community Center. The conference was dedicated to the local writer who wants to know more about writing. Seminars were held at the Community Center on October 13th from 10:30am to 5:30pm in four different rooms. The keynote speaker was New York Times best-selling

author, Robert Dugoni. In honor of the keynote speaker, the conference was focused on suspense topics, but panel discussions were held on many different genres including fiction, non-fiction, poetry, fantasy and children's literature. This free event was hosted by the Richland Arts Commission in partnership with Richland Parks and Recreation.

Tri-Cities International Fantastic Film Festival

The 2nd Annual Tri-Cities International Fantastic Film Festival was held in the Richland Community Center Activity Room on October 19th and 20th. Friday evening featured 22 different Science Fiction and Fantasy short films. Horror films were shown on Saturday, with 22 different films on the agenda. A Zombie Walk and Costume Contest were also held on Saturday, with the walk stretching from John Dam Plaza to the Community Center. More than 100 "Zombies" participated. There was no charge to attend the festival.



The Cribbage Crew

This group of fun-loving seniors meets in the Richland Community Center Lounge every Wednesday morning at 8:00am. They always invite others to join their game and then wrap it up about 11:30am.



Party Bridge

"Party Bridge is for those who don't take the game too seriously," says Rose Moore, Activity Lead. The participants, who are willing to coach others, meet Monday and Wednesday mornings at 8:30am in the Richland Community Center Games Room.



REI Diva Night

Jen Davis and Sherry Gartside recently attended the Annual Diva Night at REI in Kennewick. Their display showcased a variety of activities being offered through Richland Community Center. Approximately 150 women of all ages had the opportunity to meet with outdoor/sports related businesses, community organizations, and product vendors to learn more about activities related to health, nutrition, fitness and outdoor adventure.



Fall Carnival

On Friday, October 26th Richland Parks and Recreation hosted over 400 people at the annual Fall Carnival, a 50% increase over last year. Participants at the evening event had a frighteningly great time taking part in all the games, the scary maze, the haunted hayride, the diabolical scavenger hunt, the "round the campfire" stories, and all the other spooky activities. There was even a Zombie Flash Dance!



Guardian Angel Visit

"Visiting the Richland Community Center is one of our very favorite things to do," exclaims a smiling Guardian Angel resident during the October monthly visit. The colorful trees and river view are especially nice this time of year. The caregiver says that getting out and mixing with the other patrons at the Center really brightens the day for these folks.



Parks and Facilities

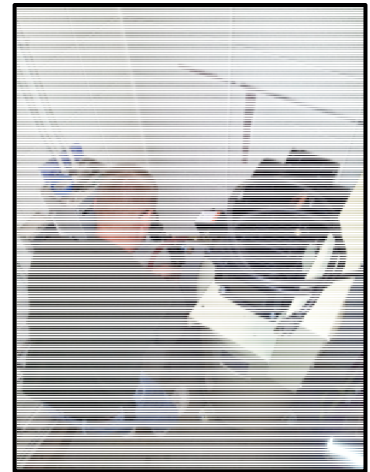
Winter Weatherization

It's that time of the year again when crews are busily winterizing sprinklers, comfort stations, drinking fountains and park accessories. Thirty parks have been done to date with many more scheduled in the near future.



Air Compressor Replaced At First Station 3

Parks and Facilities crews replaced an air compressor at Fire Station 3 to ensure that the City's fire trucks have adequate response time. The air compressor keeps the breaks charged on the trucks at all times, which would eliminate any down time.



Fallen Tree

A large tree was removed from John Dam Plaza after it fell due to its roots disintegrating.



John Dam Plaza Tree Lighting Ceremony

Friday, November 23rd from 4:30 – 7:30pm the Annual Tree Lighting Ceremony will take place in John Dam Plaza and the Parkway. The actual lighting of the trees will be at 5:00pm. There will be several exciting activities available. No fee.

Richland Community Center Holiday Activities

The Model Railroad Display

Come visit the Tri-City Model Railroaders holiday display which includes a village, beautiful countryside, as well as the train. This large display fills the entire room and brings a smile to the faces of young and old alike. No fee.

Friday, December 7, 6:30 – 10:00pm

Saturday, December 8, 10:00am – 10:00pm

Richland Community Center Lounge

Barbershop Quartet

Enjoy a mix of holiday songs and songs from yesteryear. Warm up with the holiday music while waiting for the boat parade. No fee.

Friday, December 7, 6:30 – 7:30pm

Richland Community Center, Riverview Room

Holiday by the River

Saturday, December 8, 3:00 – 8:00pm

Tuba Music – 3:00 – 4:30

Santa Arrives – 6:30pm

Enjoy the warming fire and refreshments while waiting for the boats.

Watch the boats from the warmth of the Richland Community Center, or for a better view, head on out to the river celebration.

Boat Parade takes place both Friday and Saturday evenings with boats arriving at the Richland Community Center about 7:30pm, depending on wind and weather conditions.

2012 SCHEDULE OF EVENTS

<u>DATE</u>	<u>EVENT</u>	<u>LOCATION</u>	<u>TIME</u>
Nov 10	Columbia Classic Fun Run	Paths	
Nov 23	Tree Lighting Ceremony	John Dam Plaza	5:00pm
Dec 7	Model Railroad Display	Community Center	All Day
	Barbershop Quartet	Community Center	6:00pm
	Lighted Boat Parade	Community Center	7:30pm
Dec 8	Model Railroad Display	Community Center	All Day
	Tuba Christmas	Community Center	3:00pm
	Holidays by the River	Howard Amon Park	6:30pm
Dec 31	First Night Tri-Cities	CBC	3:00pm